

# STONE ESSENCE



**WASSER WERKZ (PENANG) SDN BHD**



88E, Jalan Masjid Negeri,  
11600 Pulau Pinang, Malaysia



+604 659 1788



+6012 667 9736



wasserwerkz.penang@gmail.com



<https://wasserwerkzpenang.com/>



# INDEX

PIETRA CIOTOLI	05
LIMESTONE	15
MALMSTONE	23
GRITSTONE	29
VEIN TRAVERTINE	37
CROSS TRAVERTINE	45
STONEHENGE	51
COLUMBUS	57
LOMBARDIA	65
MOORE STONE	73
BASALT	79





MATT

LAPPATO

ANTI-SLIP

# 3 SURFACES

One Complete Solution To Cover Most Of Architectural Spaces In A Harmonious Way.

## MATT

Helps To Create A Certain Softness That Is Both Calming And Tranquil, Which A Dull And Lusterless Surface Is Trending Now.

## LAPPATO

A Reflective Or Semi-Glossy Surface That Most Modern Urban Homes Applied For Their Own Interior Designs.

## ANTI-SLIP

Reducing The Chance Of Slip And Fall Accidents, Make Litigation At Your Work Place And Public Area, With Yet All Elegance No Less.



# PIETRA CIOTOLI

## PORCELAIN

### FULL BODY

- MATT
- LAPPATO
- ANTI-SLIP

## WALL TILE

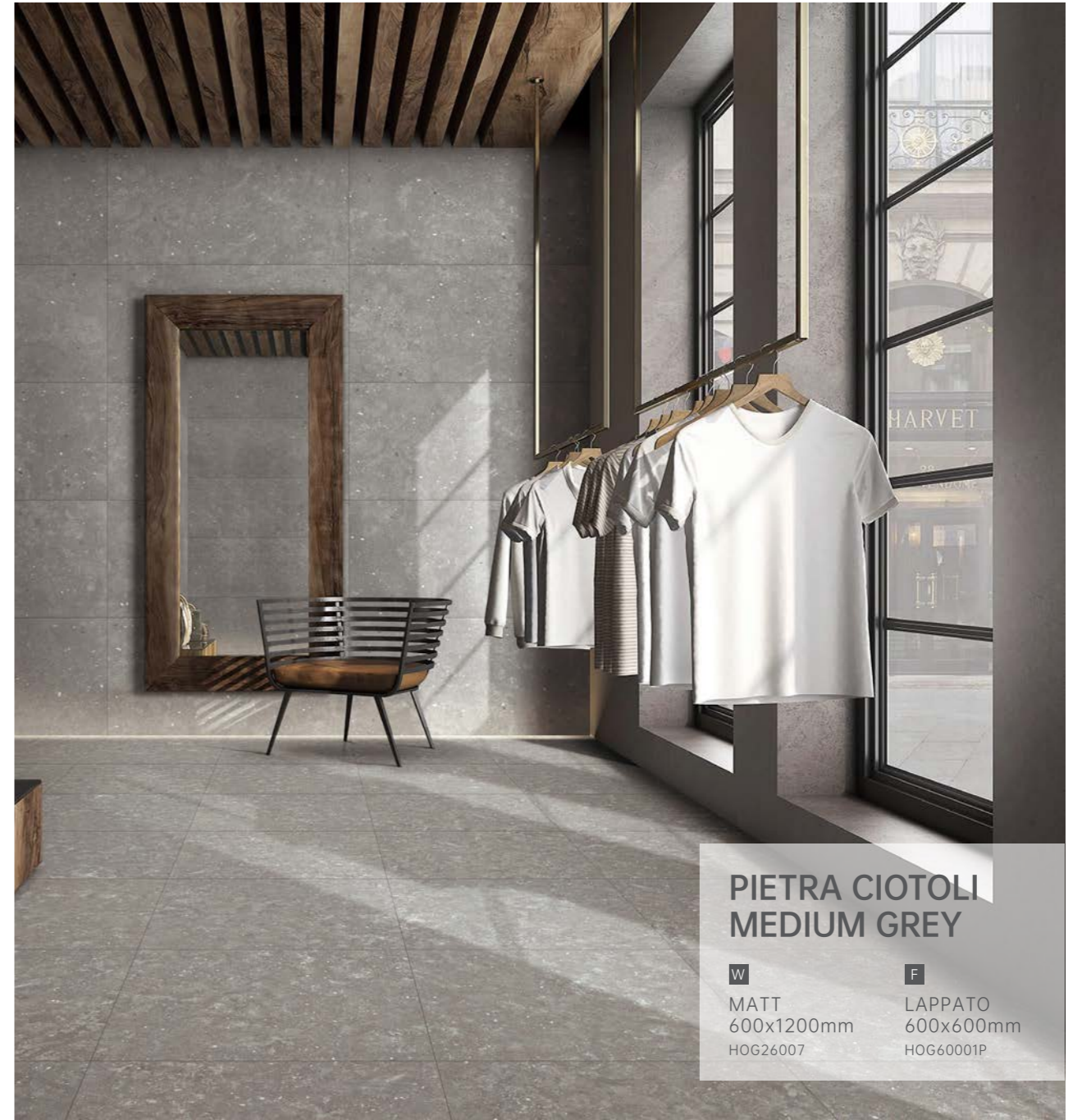
- GLOSSY
- WAVE
- DÉCOR





**PIETRA CIOTOLI  
LIGHT GREY**

**F**  
MATT ( ANTI-SLIP )  
600x600mm  
HOG60508



**PIETRA CIOTOLI  
MEDIUM GREY**

<b>W</b>	<b>F</b>
MATT	LAPPATO
600x1200mm	600x600mm
HOG26007	HOG60001P

**MATT**

A Refined Finish Of The Collection, An Elegant Surface That Is Pleasant To Touch. It Can Fulfill The Most Demanding Standards.



**Wear-resisting**



**Non-slipping**

**LAPPATO**

The Lappato Surface Is An Example Of Flawless Elegance: The Surface, Soft And Silky To The Touch, Generates Subtle Reflections And Inspires The Depth And Beauty Of Stone.



**Wear-resisting**



**Non-slipping**



**PIETRA CIOTOLI  
WHITE**

**F**  
ANTI-SLIP  
600x600mm  
HOG60015

**ANTI-SLIP**

Enhanced tactile sensation on the surface, increases slip resistance, making it ideally suited for outdoor and semi-outdoor spaces.



**Wear-resisting**



**Non-slipping**



**PIETRA CIOTOLI  
DARK GREY**

**W**  
LAPPATO  
600x1200mm  
HOG26002P

**F**  
LAPPATO  
150x1200mm  
HOG26002P

**PIETRA CIOTOLI  
WHITE**

**F**  
LAPPATO  
600x600mm  
HOG60004P

PORCELAIN FULL BODY



WHITE - MATT



WHITE - LAPPATO



WHITE - ANTI-SLIP



LIGHT GREY - MATT



LIGHT GREY - LAPPATO



LIGHT GREY - ANTI-SLIP



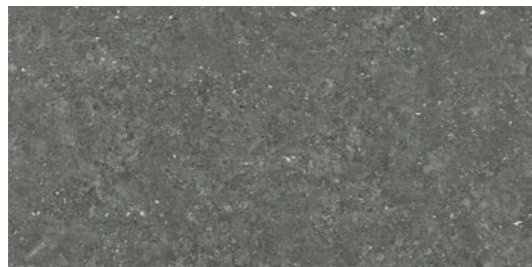
MEDIUM GREY - MATT



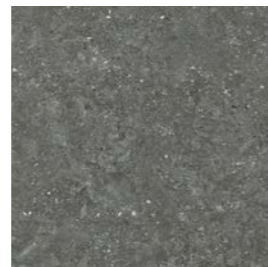
MEDIUM GREY - LAPPATO



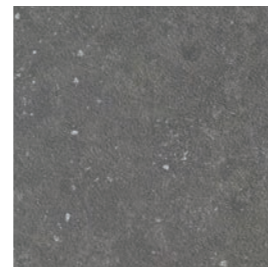
MEDIUM GREY - ANTI-SLIP



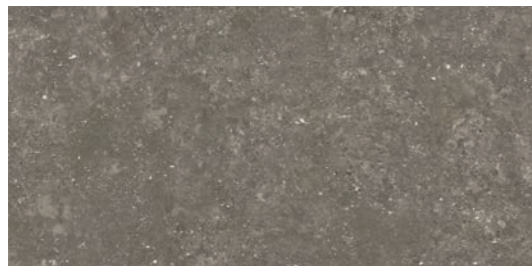
DARK GREY - MATT



DARK GREY - LAPPATO



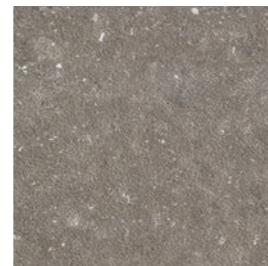
DARK GREY - ANTI-SLIP



TAUPE - MATT



TAUPE - LAPPATO



TAUPE - ANTI-SLIP

CONFORMING TO STANDARDS

\*EN 14411 / ISO 13006 APPENDIX G. GROUP BIa GL CON Eb ≤ 0.5%

							
BREAKING STRENGTH	FROST RESISTANCE	CHEMICALS RESISTANCE	STAIN RESISTANCE	ANTISLIP TEST RESULT P5 (AS-4586.A) R10 (DIN EN 16165:2023-02)	FIREPROOF	ANSI A137.1 > 0,42	SHADE VARIATION V2



COLOUR	SURFACE	600x1200mm	200x1200mm	600x600mm	300x600mm
WHITE	MATT	HOG26009	MB-HOG26009	HOG60009	MA-HOG60009
	LAPPATO	HOG26004P	MB-HOG26004P	HOG60004P	MA-HOG60004P
	ANTI-SLIP	-	-	HOG60015	MA-HOG60015
LIGHT GREY	MATT	*HOG26508	MB-HOG26508	*HOG60508	MA-HOG60508
	LAPPATO	HOG26003P	MB-HOG26003P	HOG60003P	MA-HOG60003P
	ANTI-SLIP	-	-	HOG60014	MA-HOG60014
MEDIUM GREY	MATT	HOG26007	MB-HOG26007	*HOG60507	*MA-HOG60507
	LAPPATO	HOG26001P	MB-HOG26001P	HOG60001P	MA-HOG60001P
	ANTI-SLIP	-	-	HOG60013	MA-HOG60013
DARK GREY	MATT	HOG26006	MB-HOG26006	HOG60006	MA-HOG60006
	LAPPATO	HOG26002P	MB-HOG26002P	HOG60002P	MA-HOG60002P
	ANTI-SLIP	-	-	HOG60012	MA-HOG60012
TAUPE	MATT	HOG26010	MB-HOG26010	HOG60010	MA-HOG60010
	LAPPATO	HOG26005P	MB-HOG26005P	HOG60005P	MA-HOG60005P
	ANTI-SLIP	-	-	HOG60011	MA-HOG60011

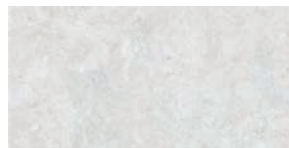
PACKING

SIZE	THICKNESS	PCS/BOX	M <sup>2</sup> /BOX	KG/BOX	CTNS/PALLET	M <sup>2</sup> /PALLET	KG/PALLET
600x1200mm	10mm	2	1.44	32.40	56	80.64	1814.40
200x1200mm	10mm	4	0.96	21.60	45	43.20	972.00
600x600mm	9.5mm	4	1.44	31.20	36	51.84	1123.20
300x600mm	9.5mm	8	1.44	31.20	40	57.60	1248.00

# WALL TILE



WHITE - GLOSSY 300x600mm



WHITE - GLOSSY



WHITE - WAVE



LIGHT GREY - GLOSSY



LIGHT GREY - WAVE



LIGHT GREY - DÉCOR

## CONFORMING TO STANDARDS

\*EN 14411 / ISO 13006 APPENDIX G. GROUP BIa GL CON Eb > 10%

							
BREAKING STRENGTH	FROST RESISTANCE	CHEMICALS RESISTANCE	STAIN RESISTANCE	RECTIFIED	FIREPROOF	GLOSS UNITS	SHADE VARIATION V2

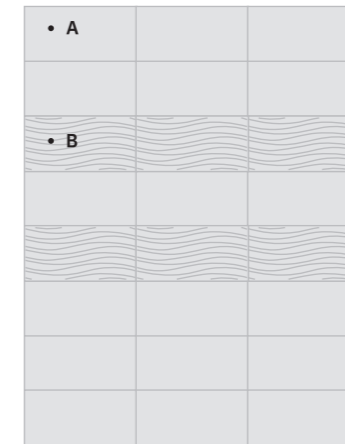
COLOUR	SURFACE	300x600mm
WHITE	GLOSSY	3A60793
	WAVE	3E60792
	DÉCOR	-
LIGHT GREY	GLOSSY	3A60795
	WAVE	2-3E60791
	DÉCOR	2-3B60798



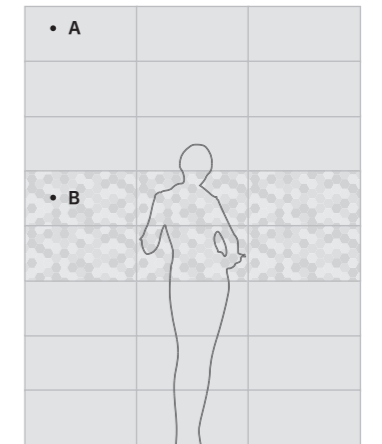
## LAYING INDICATION



A: GLOSSY 300x600mm  
B: WAVE 300x600mm



A: GLOSSY 300x600mm  
B: WAVE 300x600mm



A: GLOSSY 300x600mm  
B: DÉCOR 300x600mm

## PACKING

SIZE	THICKNESS	PCS/BOX	M <sup>2</sup> /BOX	KG/BOX	CTNS/PALLET	M <sup>2</sup> /PALLET	KG/PALLET
300x600mm	10mm	8	1.44	26.00	60	86.40	1560.00

# LIMESTONE

## PORCELAIN

### FULL BODY

- MATT
- LAPPATO
- ANTI-SLIP

## WALL TILE

- GLOSSY
- WAVE
- DÉCOR

LIMESTONE

WHITE

LIGHT GREY

MEDIUM GREY

BEIGE

DARK GREY

## LIMESTONE

Smooth To The Touch With A Seasoned Surface, Every Step We Take Is Like Gliding Gracefully And Effortlessly, Creating A Differential Feeling For Every Space.

LIMESTONE



LIMESTONE BEIGE

<b>W</b>	<b>F</b>
MATT 600x600mm KG60063	ANTI-SLIP 600x600mm KG60096



LIMESTONE LIGHT GREY

<b>W</b>	<b>D</b>	<b>F</b>
GLOSSY 300x600mm 2-6B60477	WAVE 300x600mm 3-6E60476	MATT 300x300mm 2-6R30477

PORCELAIN FULL BODY



WHITE - MATT



WHITE - LAPPATO



WHITE - ANTI-SLIP



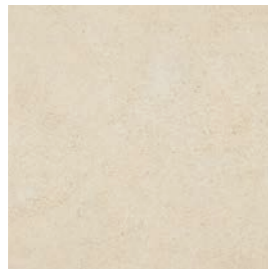
LIGHT GREY - MATT



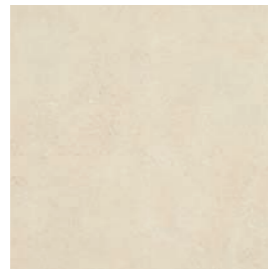
LIGHT GREY - LAPPATO



LIGHT GREY - ANTI-SLIP



BEIGE - MATT



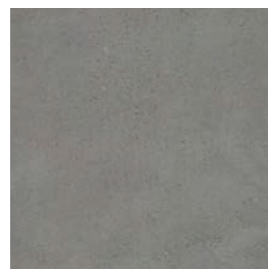
BEIGE - LAPPATO



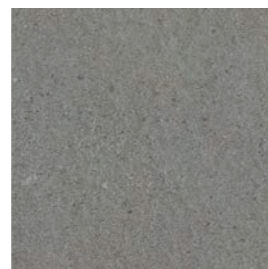
BEIGE - ANTI-SLIP



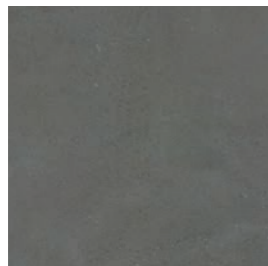
MEDIUM GREY - MATT



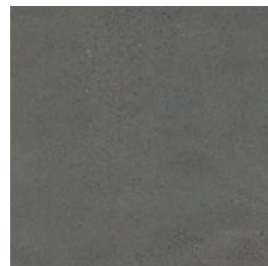
MEDIUM GREY - LAPPATO



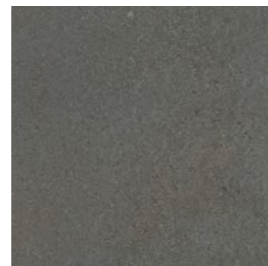
MEDIUM GREY - ANTI-SLIP



DARK GREY - MATT



DARK GREY - LAPPATO



DARK GREY - ANTI-SLIP

CONFORMING TO STANDARDS

\*EN 14411 / ISO 13006 APPENDIX G. GROUP BIa GL CON Eb ≤ 0.5%



BREAKING STRENGTH



FROST RESISTANCE



CHEMICALS RESISTANCE



STAIN RESISTANCE



RECTIFIED



FIREPROOF



ANSI A137.1 > 0,42



SHADE VARIATION V2



COLOUR	SURFACE	600x600mm		300x600mm	
		KG	MA	KG	MA
WHITE	MATT	KG60082	MA-KG60082		
	LAPPATO	KG60082P	MA-KG60082P		
	ANTI-SLIP	KG60095	MA-KG60095		
LIGHT GREY	MATT	KG60061	MA-KG60061		
	LAPPATO	KG60061P	MA-KG60061P		
	ANTI-SLIP	KG60093	MA-KG60093		
BEIGE	MATT	KG60063	MA-KG60063		
	LAPPATO	KG60063P	MA-KG60063P		
	ANTI-SLIP	KG60096	MA-KG60096		
MEDIUM GREY	MATT	KG60080	MA-KG60080		
	LAPPATO	KG60080P	MA-KG60080P		
	ANTI-SLIP	KG60094	MA-KG60094		
DARK GREY	MATT	KG60079	MA-KG60079		
	LAPPATO	KG60079P	MA-KG60079P		
	ANTI-SLIP	KG60091	MA-KG60091		



PACKING

SIZE	THICKNESS	PCS/BOX	M <sup>2</sup> /BOX	KG/BOX	CTNS/PALLET	M <sup>2</sup> /PALLET	KG/PALLET
600x600mm	9.5mm	4	1.44	31.20	36	51.84	1123.20
300x600mm	9.5mm	8	1.44	31.20	40	57.60	1248.00

# WALL TILE



WHITE - GLOSSY 300x600mm



WHITE - GLOSSY



WHITE - WAVE



WHITE - DÉCOR



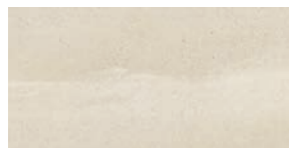
LIGHT GREY - GLOSSY



LIGHT GREY - WAVE



LIGHT GREY - DÉCOR



BEIGE - GLOSSY



BEIGE - WAVE



BEIGE - DÉCOR

## CONFORMING TO STANDARDS

\*EN 14411 / ISO 13006 APPENDIX G. GROUP BIa GL CON Eb > 10%

BREAKING STRENGTH	FROST RESISTANCE	CHEMICALS RESISTANCE	STAIN RESISTANCE	RECTIFIED	FIREPROOF	GLOSS UNITS	SHADE VARIATION V2

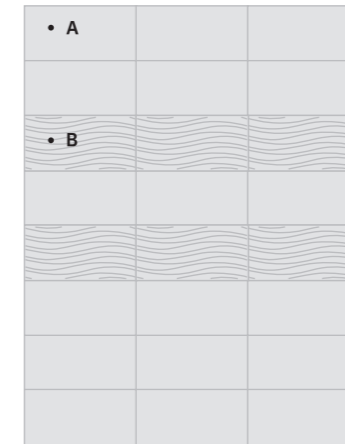
COLOUR	SURFACE	300x600mm
WHITE	GLOSSY	6A60478
	WAVE	3-6E60480
	DÉCOR	4-6B60576
LIGHT GREY	GLOSSY	2-6B60477
	WAVE	3-6E60476
	DÉCOR	4-6B60575
BEIGE	GLOSSY	2-6B60481
	WAVE	3-6E60479
	DÉCOR	4-6B60578



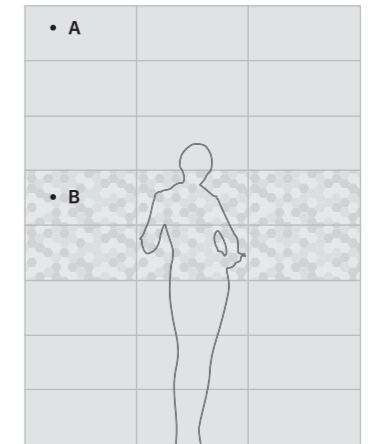
## LAYING INDICATION



A: GLOSSY 300x600mm  
B: WAVE 300x600mm



A: GLOSSY 300x600mm  
B: WAVE 300x600mm



A: GLOSSY 300x600mm  
B: DÉCOR 300x600mm

## PACKING

SIZE	THICKNESS	PCS/BOX	M <sup>2</sup> /BOX	KG/BOX	CTNS/PALLET	M <sup>2</sup> /PALLET	KG/PALLET
300x600mm	10mm	8	1.44	26.00	60	86.40	1560.00

# MALMSTONE

## PORCELAIN

### FULL BODY

- MATT
- LAPPATO
- ANTI-SLIP

## WALL TILE

- GLOSSY
- WAVE
- DÉCOR



## MALMSTONE

Classic And Soft Creamy Colors Inspire All The Design Passion,  
Yet Make You Feel All The Toughness Of Natural Stone.



**MALMSTONE  
WHITE**

**W**  
MATT ( ANTI-SLIP )  
300x600mm  
HOG60560



**MALMSTONE  
LIGHT GREY**

**W**  
MATT  
200x1200mm  
HOG26039

**MALMSTONE  
DARK GREY**

**F**  
LAPPATO  
600x600mm  
HOG60033P

PORCELAIN FULL BODY



WHITE - MATT



WHITE - LAPPATO



WHITE - ANTI-SLIP



LIGHT GREY - MATT



LIGHT GREY - LAPPATO



LIGHT GREY - ANTI-SLIP



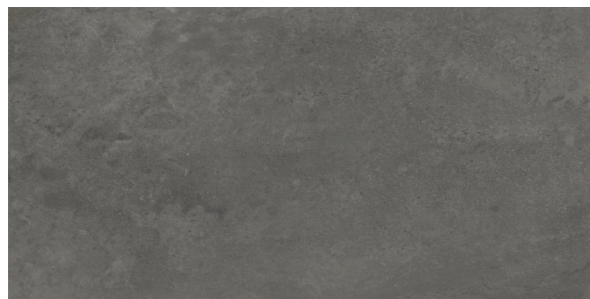
MEDIUM GREY - MATT



MEDIUM GREY - LAPPATO



MEDIUM GREY - ANTI-SLIP



DARK GREY - MATT



DARK GREY - LAPPATO



DARK GREY - ANTI-SLIP

CONFORMING TO STANDARDS

\*EN 14411 / ISO 13006 APPENDIX G. GROUP BIa GL CON Eb ≤ 0.5%

BREAKING STRENGTH	FROST RESISTANCE	CHEMICALS RESISTANCE	STAIN RESISTANCE	ANTISLIP TEST RESULT P5 (AS-4586.A) R10 (DIN EN 16165:2023-02)	FIREPROOF	ANSI A137.1 > 0,42	SHADE VARIATION V2



COLOUR	SURFACE	600x1200mm	200x1200mm	600x600mm	300x600mm
WHITE	MATT	HOG26560	MB-HOG26560	*HOG60560	MA-HOG60560
	LAPPATO	HOG26036P	MB-HOG26036P	HOG60061P	MA-HOG60061P
	ANTI-SLIP	-	-	HOG60042	MA-HOG60042
LIGHT GREY	MATT	*HOG26539	MB-HOG26539	*HOG60539	MA-HOG60539
	LAPPATO	HOG26035P	MB-HOG26035P	HOG60035P	MA-HOG60035P
	ANTI-SLIP	-	-	HOG60043	MA-HOG60043
MEDIUM GREY	MATT	HOG26038	MB-HOG26038	*HOG60538	MA-HOG60538
	LAPPATO	HOG26034P	MB-HOG26034P	HOG60034P	MA-HOG60034P
	ANTI-SLIP	-	-	HOG60044	MA-HOG60044
DARK GREY	MATT	HOG26037	MB-HOG26037	*HOG60537	MA-HOG60537
	LAPPATO	HOG26033P	MB-HOG26033P	HOG60033P	MA-HOG60033P
	ANTI-SLIP	-	-	HOG60045	MA-HOG60045

PACKING

SIZE	THICKNESS	PCS/BOX	M <sup>2</sup> /BOX	KG/BOX	CTNS/PALLET	M <sup>2</sup> /PALLET	KG/PALLET
600x1200mm	10mm	2	1.44	32.40	56	80.64	1814.40
200x1200mm	10mm	4	0.96	21.60	45	43.20	972.00
600x600mm	9.5mm	4	1.44	31.20	36	51.84	1123.20
300x600mm	9.5mm	8	1.44	31.20	40	57.60	1248.00

# GRITSTONE

## PORCELAIN

- POLISHED
- MATT ( ANTI-SLIP )



GRITSTONE

WHITE

LIGHT GREY

MEDIUM GREY

BEIGE

DARK GREY

### GRITSTONE

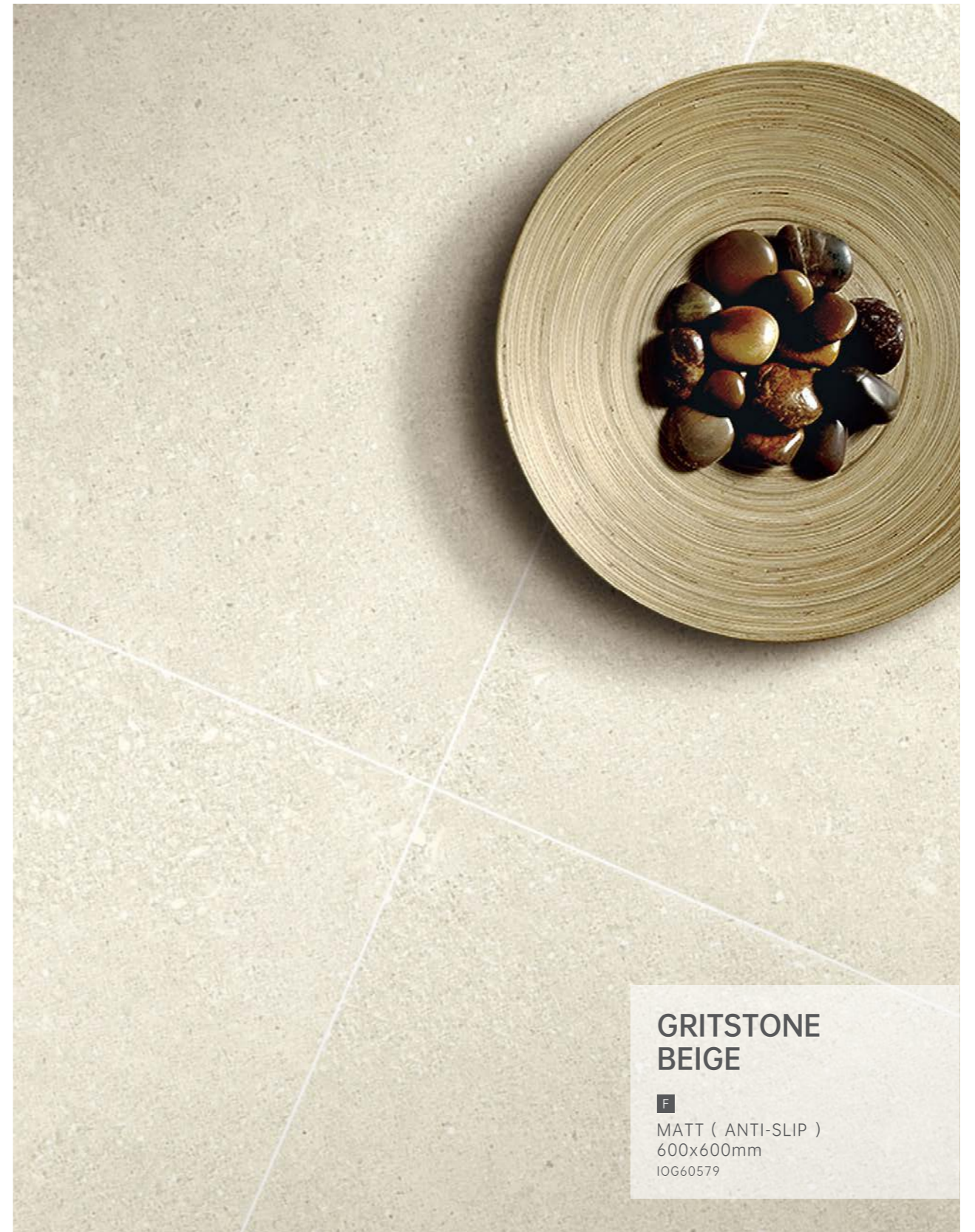
Embrace The Whisper Of Stone. A Canvas Of Tranquil Hues,Where Every Step Is A Dance With Elegance.

GRITSTONE



**GRITSTONE  
WHITE**

**F**  
POLISHED  
600x600mm  
IPOG60078



**GRITSTONE  
BEIGE**

**F**  
MATT ( ANTI-SLIP )  
600x600mm  
IOG60579



**GRITSTONE  
LIGHT GREY**

**F**  
POLISHED  
600x600mm  
IPOG60080



**GRITSTONE  
MEDIUM GREY**

**W**  
MATT ( ANTI-SLIP )  
600x1200mm  
IOG26581

**GRITSTONE  
DARK GREY**

**F**  
MATT ( ANTI-SLIP )  
600x1200mm  
IOG26582

# PORCELAIN



WHITE - POLISHED



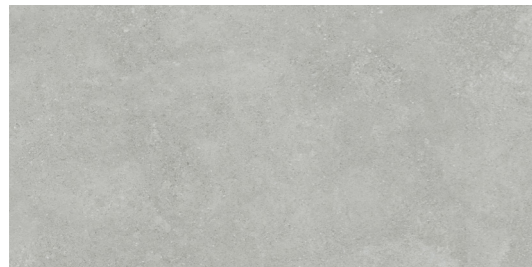
WHITE - MATT ( ANTI-SLIP )



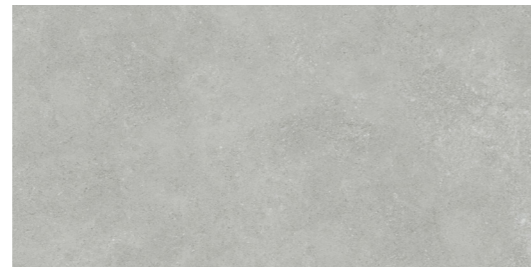
BEIGE - POLISHED



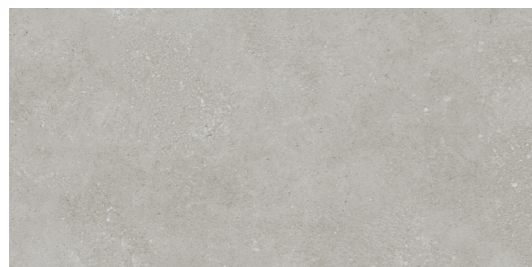
BEIGE - MATT ( ANTI-SLIP )



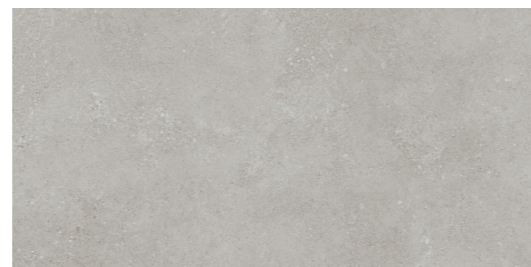
LIGHT GREY - POLISHED



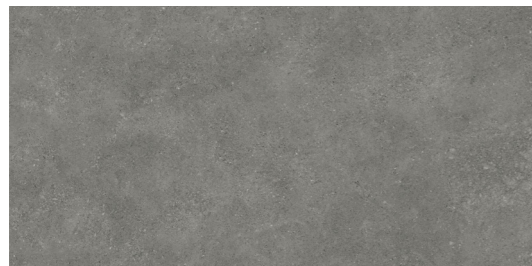
LIGHT GREY - MATT ( ANTI-SLIP )



MEDIUM GREY - POLISHED



MEDIUM GREY - MATT ( ANTI-SLIP )





DARK GREY - POLISHED



DARK GREY - MATT ( ANTI-SLIP )

## CONFORMING TO STANDARDS

\*EN 14411 / ISO 13006 APPENDIX G. GROUP BIa GL CON Eb ≤ 0.5%

							
BREAKING STRENGTH	FROST RESISTANCE	CHEMICALS RESISTANCE	STAIN RESISTANCE	ANTISLIP TEST RESULT P5 (AS-4586.A) R10 (DIN EN 16165:2023-02)	FIREPROOF	ANSI A137.1 > 0,42	SHADE VARIATION V2



COLOUR	SURFACE	600x1200mm	600x600mm
WHITE	POLISHED	IPOG26078	IPOG60078
	MATT ( ANTI-SLIP )	IOG26578	IOG60578
BEIGE	POLISHED	IPOG26079	IPOG60079
	MATT ( ANTI-SLIP )	IOG26579	IOG60579
LIGHT GREY	POLISHED	IPOG26080	IPOG60080
	MATT ( ANTI-SLIP )	IOG26580	IOG60580
MEDIUM GREY	POLISHED	IPOG26081	IPOG60081
	MATT ( ANTI-SLIP )	IOG26581	IOG60581
DARK GREY	POLISHED	IPOG26082	IPOG60082
	MATT ( ANTI-SLIP )	IOG26582	IOG60582

## PACKING

SIZE	THICKNESS	PCS/BOX	M <sup>2</sup> /BOX	KG/BOX	CTNS/PALLET	M <sup>2</sup> /PALLET	KG/PALLET
600x1200mm	10mm	2	1.44	32.40	56	80.64	1814.40
600x600mm	9.5mm	4	1.44	31.00	36	51.84	1116.00

# VEIN TRAVERTINE

## PORCELAIN

- POLISHED
- MATT ( ANTI-SLIP )



VEIN TRAVERTINE



BEIGE

CREMA

LIGHT GREY

MEDIUM GREY

VEIN TRAVERTINE

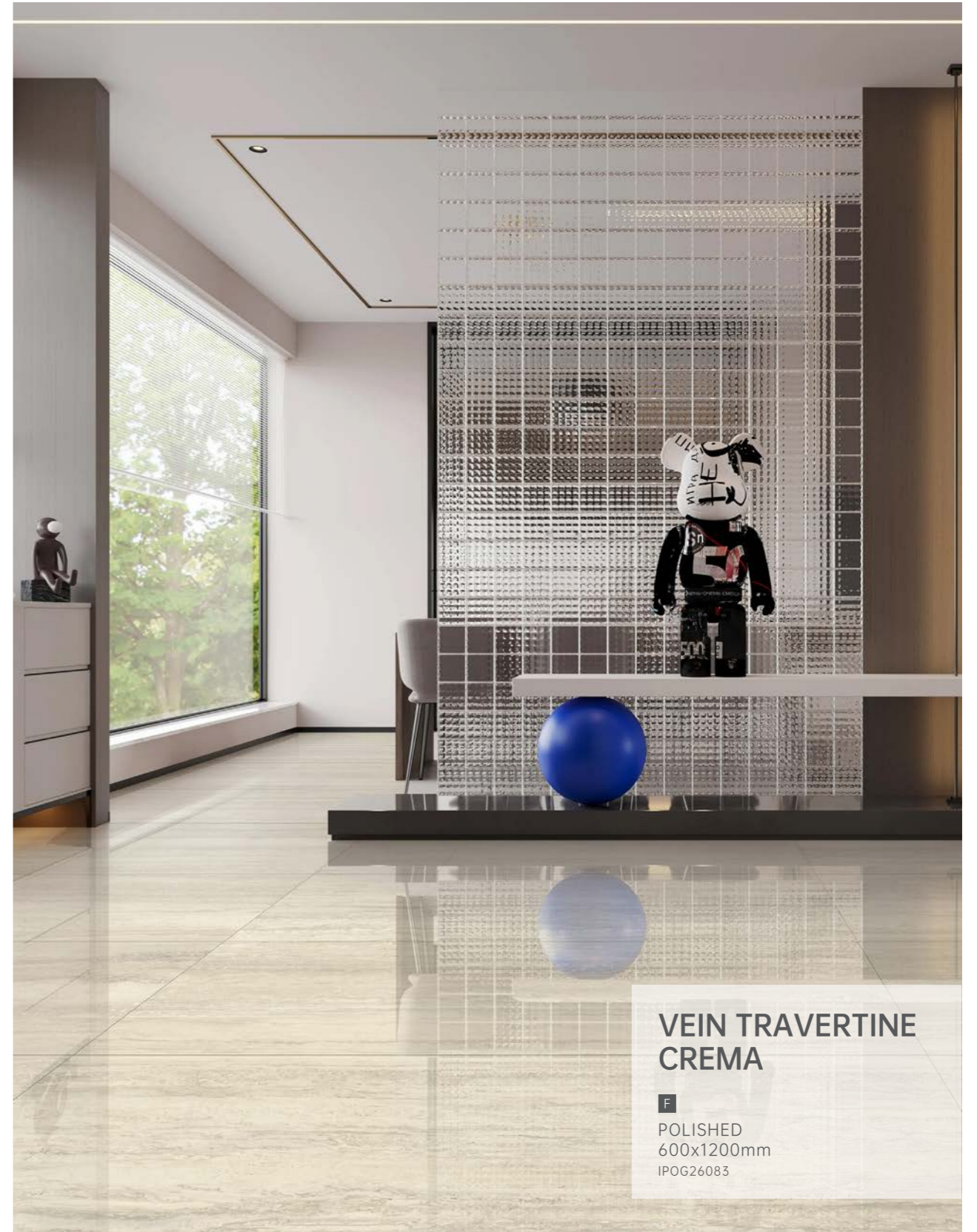
### VEIN TRAVERTINE

Embrace The Linear Legacy, Where Stone's Narrative Weaves A Tapestry Of Understated Luxury.



**VEIN TRAVERTINE  
BEIGE**

**F**  
POLISHED  
600x1200mm  
IPOG26084



**VEIN TRAVERTINE  
CREMA**

**F**  
POLISHED  
600x1200mm  
IPOG26083



VEIN TRAVERTINE  
LIGHT GREY

**F**  
POLISHED  
600x1200mm  
IPOG26085



VEIN TRAVERTINE  
MEDIUM GREY

**F**  
MATT ( ANTI-SLIP )  
600x600mm  
IOG60586

PORCELAIN



CREMA - POLISHED



CREMA - MATT ( ANTI-SLIP )



BEIGE - POLISHED



BEIGE - MATT ( ANTI-SLIP )



LIGHT GREY - POLISHED



LIGHT GREY - MATT ( ANTI-SLIP )



MEDIUM GREY - POLISHED



MEDIUM GREY - MATT ( ANTI-SLIP )

CONFORMING TO STANDARDS

\*EN 14411 / ISO 13006 APPENDIX G. GROUP BIa GL CON Eb ≤ 0.5%



BREAKING STRENGTH



FROST RESISTANCE



CHEMICALS RESISTANCE



STAIN RESISTANCE



ANTISLIP TEST RESULT P5 (AS-4586.A) R10 (DIN EN 16165:2023-02)



FIREPROOF



ANSI A137.1 > 0,42

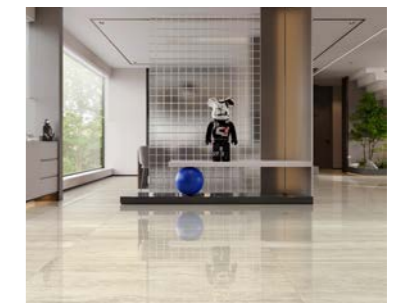


SHADE VARIATION V2



VEIN TRAVERTINE

COLOUR	SURFACE	600x1200mm	600x600mm
CREMA	POLISHED	IPOG26083	IPOG60083
	MATT ( ANTI-SLIP )	IOG26583	IOG60583
BEIGE	POLISHED	IPOG26084	IPOG60084
	MATT ( ANTI-SLIP )	IOG26584	IOG60584
LIGHT GREY	POLISHED	IPOG26085	IPOG60085
	MATT ( ANTI-SLIP )	IOG26585	IOG60585
MEDIUM GREY	POLISHED	IPOG26086	IPOG60086
	MATT ( ANTI-SLIP )	IOG26586	IOG60586



PACKING

SIZE	THICKNESS	PCS/BOX	M <sup>2</sup> /BOX	KG/BOX	CTNS/PALLET	M <sup>2</sup> /PALLET	KG/PALLET
600x1200mm	10mm	2	1.44	32.40	56	80.64	1814.40
600x600mm	9.5mm	4	1.44	31.00	36	51.84	1116.00

# CROSS TRAVERTINE

## PORCELAIN

- POLISHED
- MATT ( ANTI-SLIP )



### CROSS TRAVERTINE

A Horizon's Gentle Curve, In Stone That Captures Serene Embrace.



**CROSS TRAVERTINE  
CREMA**

**F**  
MATT ( ANTI-SLIP )  
600x600mm  
10G60574



**CROSS TRAVERTINE  
MEDIUM GREY**

**F**  
MATT ( ANTI-SLIP )  
600x1200mm  
10G26577

PORCELAIN



CREMA - POLISHED



CREMA - MATT ( ANTI-SLIP )



BEIGE - POLISHED



BEIGE - MATT ( ANTI-SLIP )



LIGHT GREY - POLISHED



LIGHT GREY - MATT ( ANTI-SLIP )



MEDIUM GREY - POLISHED



MEDIUM GREY - MATT ( ANTI-SLIP )

CONFORMING TO STANDARDS

\*EN 14411 / ISO 13006 APPENDIX G. GROUP BIa GL CON Eb ≤ 0.5%



BREAKING STRENGTH



FROST RESISTANCE



CHEMICALS RESISTANCE



STAIN RESISTANCE



ANTISLIP TEST RESULT  
P5 (AS-4586.A)  
R10 (DIN EN 16165:2023-02)



FIREPROOF



ANSI A137.1  
> 0,42



SHADE VARIATION V2



CROSS TRAVERTINE

COLOUR	SURFACE	600x1200mm	600x600mm
CREMA	POLISHED	IPOG26074	IPOG60074
	MATT ( ANTI-SLIP )	IOG26574	IOG60574
BEIGE	POLISHED	IPOG26075	IPOG60075
	MATT ( ANTI-SLIP )	IOG26575	IOG60575
LIGHT GREY	POLISHED	IPOG26076	IPOG60076
	MATT ( ANTI-SLIP )	IOG26576	IOG60576
MEDIUM GREY	POLISHED	IPOG26077	IPOG60077
	MATT ( ANTI-SLIP )	IOG26577	IOG60577



PACKING

SIZE	THICKNESS	PCS/BOX	M <sup>2</sup> /BOX	KG/BOX	CTNS/PALLET	M <sup>2</sup> /PALLET	KG/PALLET
600x1200mm	10mm	2	1.44	32.40	56	80.64	1814.40
600x600mm	9.5mm	4	1.44	31.00	36	51.84	1116.00

# STONEHENGE

---

## PORCELAIN

- BATIK



### STONEHENGE

Stands As A Timeless Wonder, Its Ancient Stones Whispering Tales Of Bygone Eras, Forever Renewed Under The Vast Open Sky.



**STONEHENGE  
BEIGE**

<b>W</b>	<b>F</b>
BATIK	BATIK
900x1800mm	900x1800mm
IFA1890001P	IFA1890001P



**STONEHENGE  
DARK GREY**

<b>W</b>
BATIK
600x1200mm
IFA26004P

# PORCELAIN



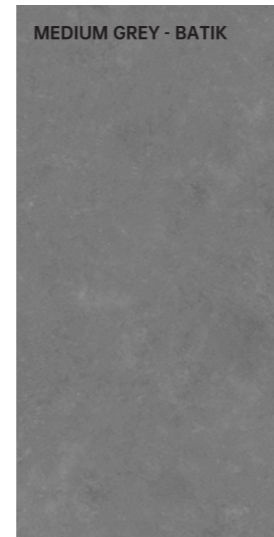
BEIGE - BATIK

IFA1890001P 900x1800mm



LIGHT GREY - BATIK

IFA1890002P 900x1800mm



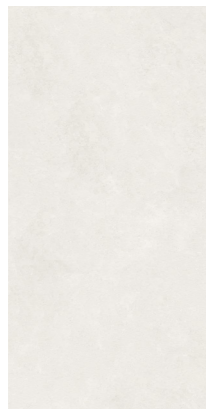
MEDIUM GREY - BATIK

IFA1890003P 900x1800mm

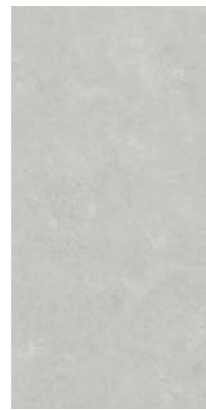


DARK GREY - BATIK

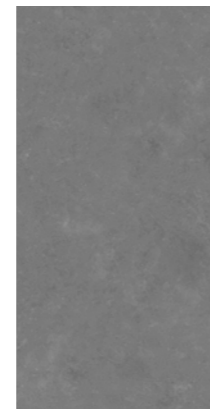
IFA1890004P 900x1800mm



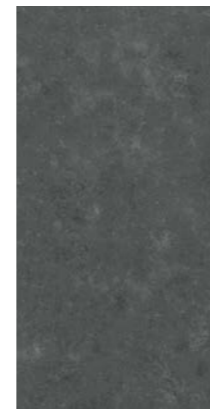
IFA26001P  
600x1200mm



IFA26002P  
600x1200mm



IFA26003P  
600x1200mm



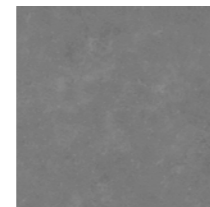
IFA26004P  
600x1200mm



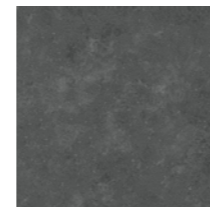
IFA60001P  
600x600mm



IFA60002P  
600x600mm



IFA60003P  
600x600mm



IFA60004P  
600x600mm

## CONFORMING TO STANDARDS

\*EN 14411 / ISO 13006 APPENDIX G. GROUP BIa GL CON Eb ≤ 0.5%

(IGR26093 / IGR26094 / IGR26095 0.5% - 3%)



BREAKING STRENGTH



FROST RESISTANCE



CHEMICALS RESISTANCE



STAIN RESISTANCE



RECTIFIED



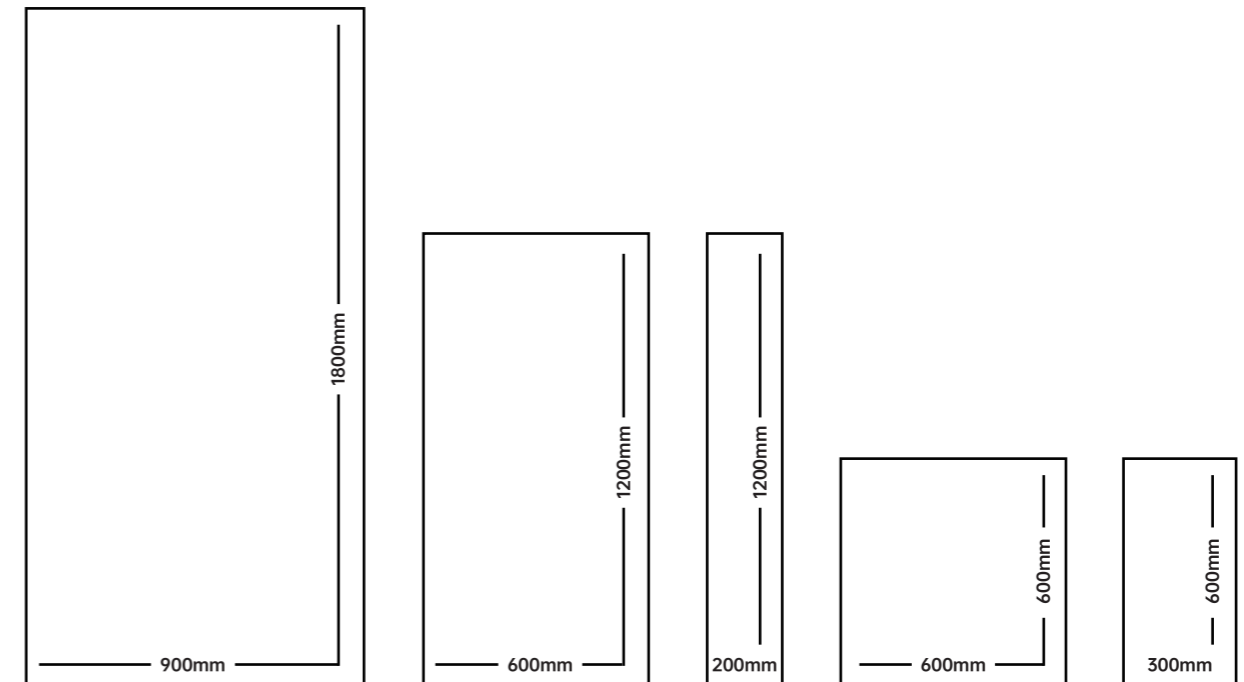
FIREPROOF



ANSI A137.1 > 0,42



SHADE VARIATION V2



COLOUR	SURFACE	900x1800mm	600x1200mm	200x1200mm	600x600mm	300x600mm
BEIGE	BATIK	IFA1890001P	IFA26001P	MB-IFA26001P	IFA60001P	MA-IFA60001P
LIGHT GREY	BATIK	IFA1890002P	IFA26002P	MB-IFA26002P	IFA60002P	MA-IFA60002P
MEDIUM GREY	BATIK	IFA1890003P	IFA26003P	MB-IFA26003P	IFA60003P	MA-IFA60003P
DARK GREY	BATIK	IFA1890004P	IFA26004P	MB-IFA26004P	IFA60004P	MA-IFA60004P

## PACKING

SIZE	THICKNESS	PCS/BOX	M <sup>2</sup> /BOX	KG/BOX	CTNS/PALLET	M <sup>2</sup> /PALLET	KG/PALLET
900x1800mm	10.5mm	1	1.62	40.50	52	84.24	2106.00
600x1200mm	10mm	2	1.44	36.00	56	80.64	1814.40
200x1200mm	10mm	4	0.96	24.00	45	43.20	1080.00
600x600mm	9.5mm	4	1.44	32.00	36	51.84	1116.00
300x600mm	9.5mm	8	1.44	32.00	40	57.60	1280.00

# COLUMBUS

## VITRIFIED PORCELAIN

- POLISHED
- MATT



BEIGE

LIGHT GREY

MEDIUM GREY

DARK GREY

### COLUMBUS

A Voyage Through Timeless Textures, Where Every Touch Is An Echo Of A Legendary Journey.



**COLUMBUS  
BEIGE**

**F**  
MATT  
600x600mm  
K0GR60089



**COLUMBUS  
LIGHT GREY**

**F**  
POLISHED  
600x600mm  
KPOGR60088



**COLUMBUS  
MEDIUM GREY**

**F**  
POLISHED  
600x1200mm  
KPOGR26087



**COLUMBUS  
DARK GREY**

**F**  
POLISHED  
600x600mm  
KPOGR60090

# VITRIFIED PORCELAIN



BEIGE - POLISHED



BEIGE - MATT



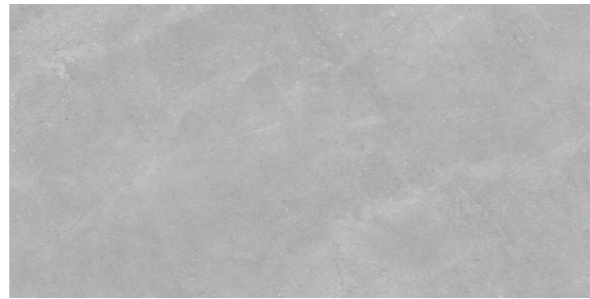
LIGHT GREY - POLISHED



LIGHT GREY - MATT



MEDIUM GREY - POLISHED



MEDIUM GREY - MATT



DARK GREY - POLISHED



DARK GREY - MATT

## CONFORMING TO STANDARDS

\*EN 14411 / ISO 13006 APPENDIX H. GROUP BIIa GL CON 0.5% Eb ≤3%



BREAKING STRENGTH



FROST RESISTANCE



CHEMICALS RESISTANCE



STAIN RESISTANCE



RECTIFIED



FIREPROOF



ANSI A137.1 > 0,42



SHADE VARIATION V2



COLOUR	SURFACE	600x1200mm	600x600mm
BEIGE	POLISHED	KPOGR26089	KPOGR60089
	MATT	KOGR26089	KOGR60089
LIGHT GREY	POLISHED	KPOGR26088	KPOGR60088
	MATT	KOGR26088	KOGR60088
MEDIUM GREY	POLISHED	KPOGR26087	KPOGR60087
	MATT	KOGR26087	KOGR60087
DARK GREY	POLISHED	KPOGR26090	KPOGR60090
	MATT	KOGR26090	KOGR60090



## PACKING

SIZE	THICKNESS	PCS/BOX	M <sup>2</sup> /BOX	KG/BOX	CTNS/PALLET	M <sup>2</sup> /PALLET	KG/PALLET
600x1200mm	10mm	2	1.44	32.40	56	80.64	1814.40
600x600mm	9.5mm	4	1.44	31.00	36	51.84	1116.00

# LOMBARDIA

## VITRIFIED PORCELAIN

- MATT



### LOMBARDIA

Blends Delicate Textures With Rugged Charm. Where Fingertips Dance, Tracing Whispers Of Mountain Peaks.



**LOMBARDIA  
WHITE**

**F**  
MATT  
600x600mm  
KOGR60070



**LOMBARDIA  
LIGHT GREY**

**F**  
MATT  
600x600mm  
KOGR60071



LOMBARDIA  
MEDIUM GREY

**F**  
MATT  
600x600mm  
KOGR60072



LOMBARDIA  
DARK GREY

**F**  
MATT  
600x600mm  
KOGR60073

# LOMBARDIA



WHITE

KOGR60070 600x600mm

12 PATTERNS



LIGHT GREY

KOGR60071 600x600mm

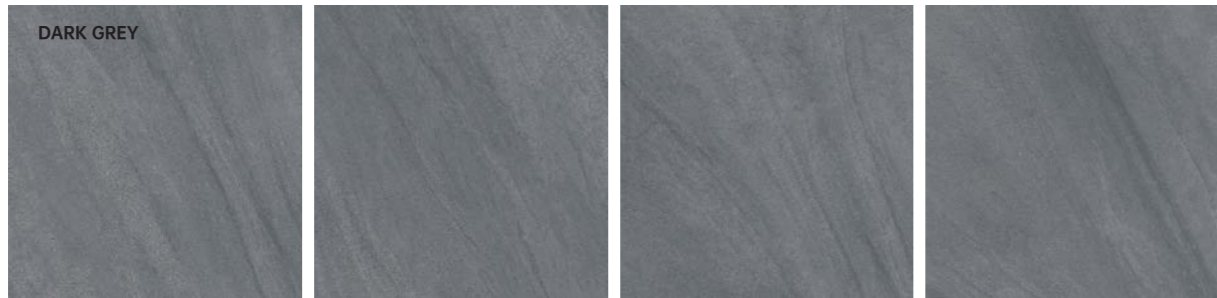
12 PATTERNS



MEDIUM GREY

KOGR60072 600x600mm

12 PATTERNS



DARK GREY

KOGR60073 600x600mm

12 PATTERNS

## CONFORMING TO STANDARDS

\*EN 14411 / ISO 13006 APPENDIX G. GROUP BIα GL CON Eb 0.5%



BREAKING STRENGTH



FROST RESISTANCE



CHEMICALS RESISTANCE



STAIN RESISTANCE



ANTISLIP TEST RESULT  
P5 (AS-4586.A)  
R10 (DIN EN 16165:2023-02)



FIREPROOF



GLOSS UNITS



SHADE VARIATION V1



COLOUR	SURFACE	600x600mm
WHITE	MATT	KOGR60070
LIGHT GREY	MATT	KOGR60071
MEDIUM GREY	MATT	KOGR60072
DARK GREY	MATT	KOGR60073



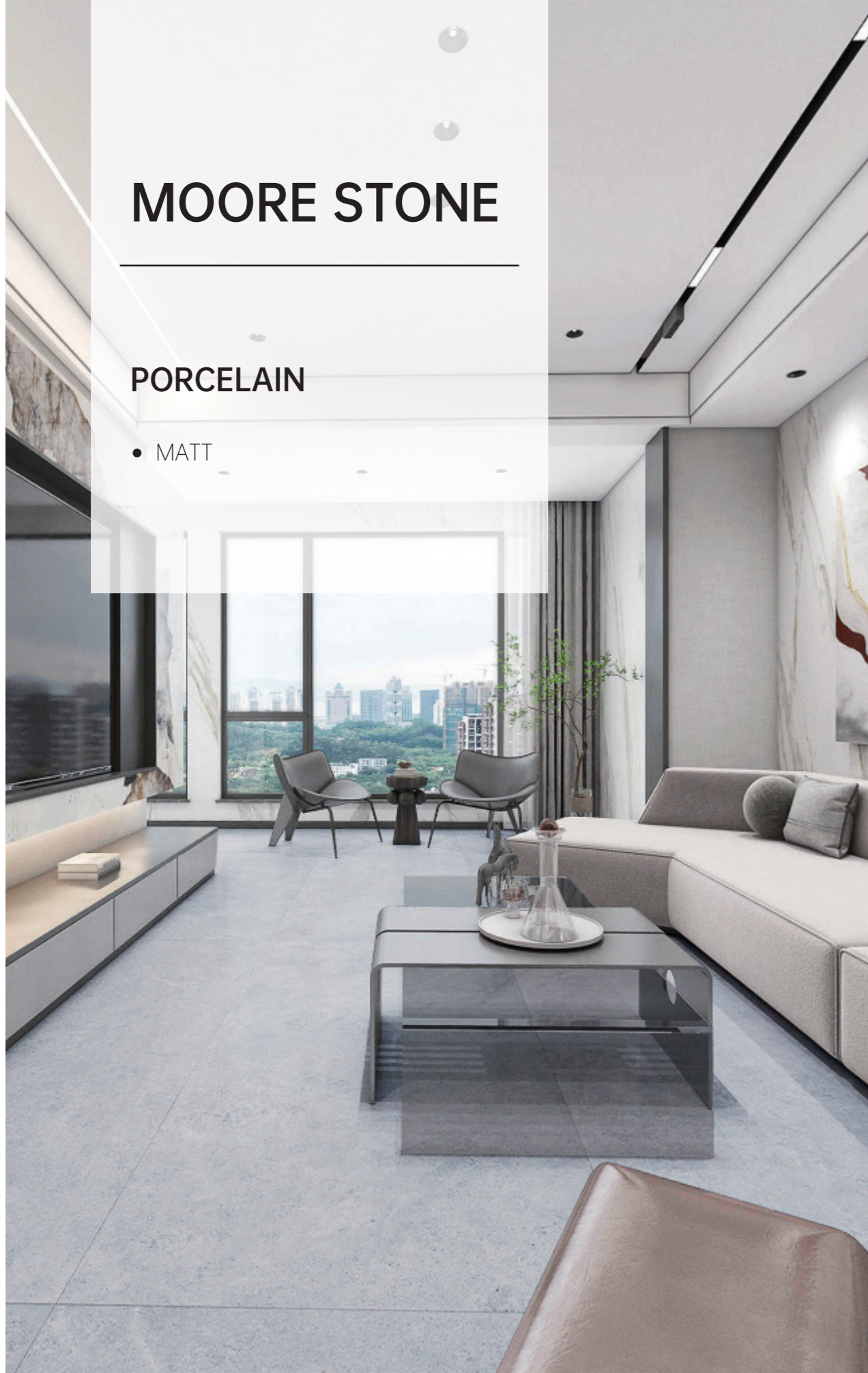
## PACKING

SIZE	THICKNESS	PCS/BOX	M <sup>2</sup> /BOX	KG/BOX	CTNS/PALLET	M <sup>2</sup> /PALLET	KG/PALLET
600x600mm	9.5mm	4	1.44	31.00	36	51.84	1116.00

# MOORE STONE

## PORCELAIN

- MATT



BEIGE

LIGHT GREY

DARK GREY

### MOORE STONE

Transform Your Space with Both Style and Convenience to Your Home Décor.



MOORE STONE  
BEIGE

**F**  
MATT  
900x1800mm  
1J1890005



MOORE STONE  
DARK GREY

**F**  
MATT  
600x600mm  
1GR60004

# PORCELAIN



BEIGE - MATT

IJ1890005 900x1800mm



LIGHT GREY - MATT

IJ1890006 900x1800mm



DARK GREY - MATT

IJ1890007 900x1800mm



IG26093 600x1200mm



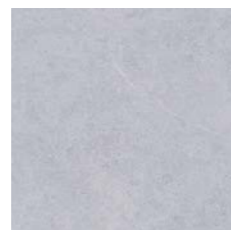
IG26094 600x1200mm



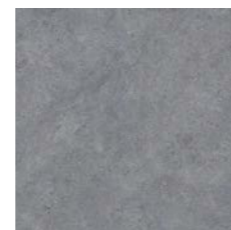
IG26095 600x1200mm



IGR60002 600x600mm



IGR60003 600x600mm



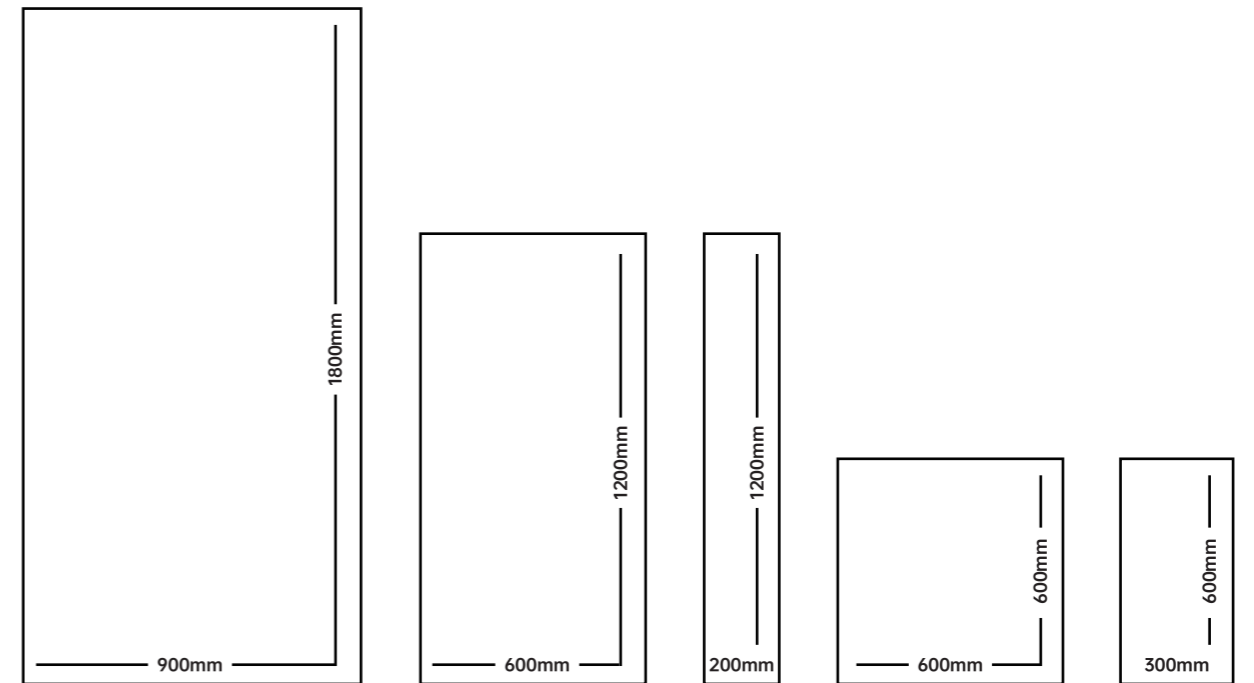
IGR60004 600x600mm

## CONFORMING TO STANDARDS

\*EN 14411 / ISO 13006 APPENDIX G. GROUP BIa GL CON Eb ≤ 0.5%

(IGR26093 / IGR26094 / IGR26095 0.5% - 3%)

- BREAKING STRENGTH
- FROST RESISTANCE
- CHEMICALS RESISTANCE
- STAIN RESISTANCE
- RECTIFIED
- FIREPROOF
- ANSI A137.1 > 0,42
- SHADE VARIATION V2



COLOUR	SURFACE	900x1800mm	600x1200mm	200x1200mm	600x600mm	300x600mm
BEIGE	MATT	IJ1890005	IG26093	MB-IG26093	IGR60002	MA-IGR60002
LIGHT GREY	MATT	IJ1890006	IG26094	MB-IG26094	IGR60003	MA-IGR60003
DARK GREY	MATT	IJ1890007	IG26095	MB-IG26095	IGR60004	MA-IGR60004

## PACKING

SIZE	THICKNESS	PCS/BOX	M <sup>2</sup> /BOX	KG/BOX	CTNS/PALLET	M <sup>2</sup> /PALLET	KG/PALLET
900x1800mm	9.5mm	1	1.62	34.30	52	84.24	1783.60
600x1200mm	10mm	2	1.44	32.40	56	80.64	1814.40
200x1200mm	10mm	4	0.96	21.60	45	43.20	972.00
600x600mm	9.5mm	4	1.44	31.00	36	51.84	1116.00
300x600mm	9.5mm	8	1.44	31.00	40	57.60	1240.00

# BASALT

## PORCELAIN

- MATT



WHITE

LIGHT GREY

MEDIUM GREY

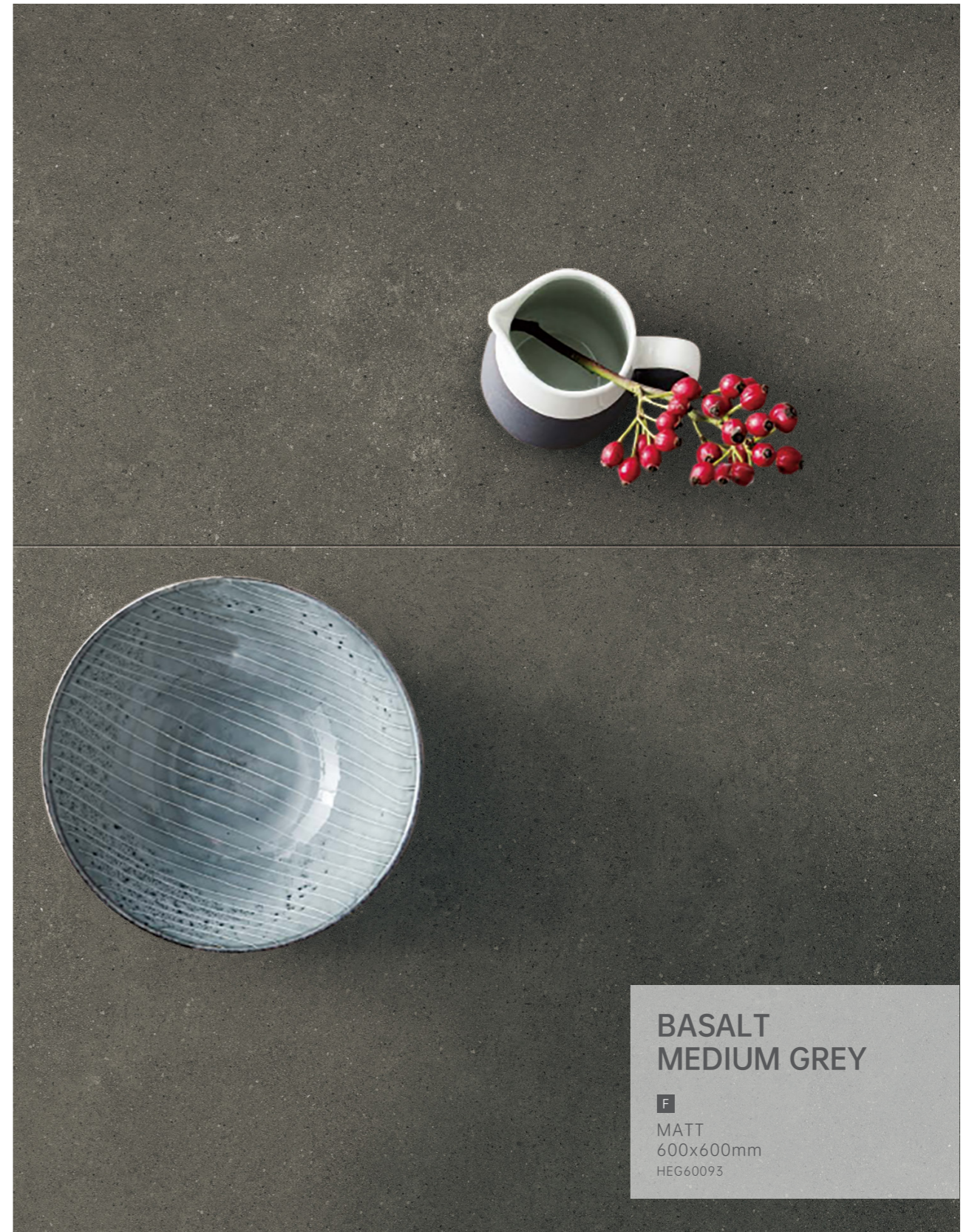
### BASALT

Forms When Lava Reaches  
The Earth's Surface At A  
Volcano Or Mid Ocean Ridge,  
Enjoying The Power Of Mighty  
Nature.



**BASALT  
LIGHT GREY**

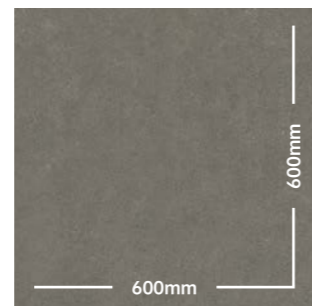
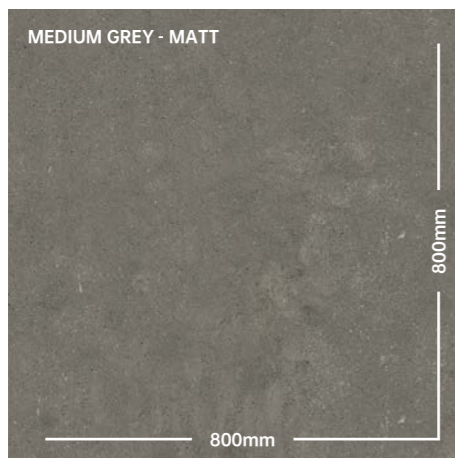
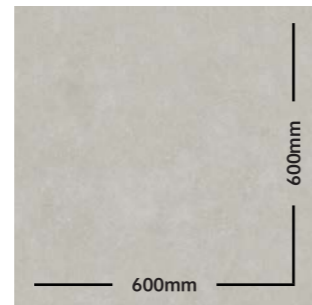
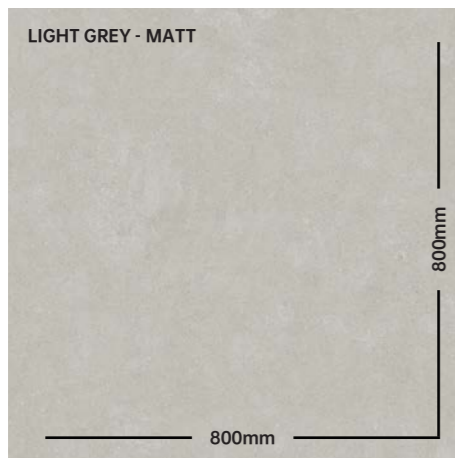
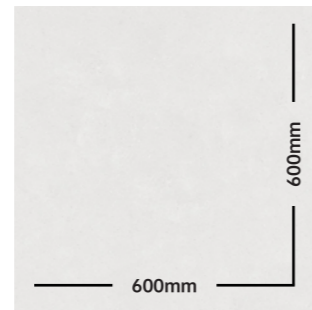
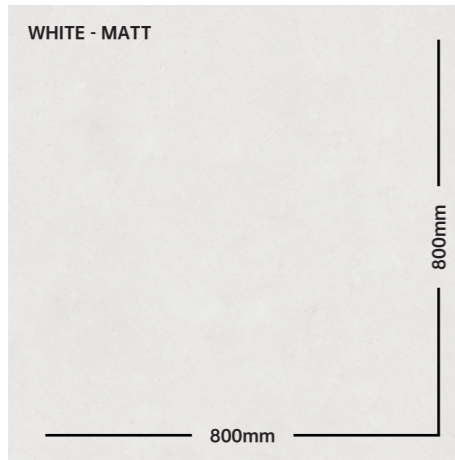
**F**  
MATT  
800x800mm  
HEG80091



**BASALT  
MEDIUM GREY**

**F**  
MATT  
600x600mm  
HEG60093

# PORCELAIN



## CONFORMING TO STANDARDS

\*EN 14411 / ISO 13006 APPENDIX G. GROUP BIa GL CON Eb ≤ 0.5% ( HGR60092 / HGR60091 / HGR60093 0.5% - 3%)

- BREAKING STRENGTH
- FROST RESISTANCE
- CHEMICALS RESISTANCE
- STAIN RESISTANCE
- RECTIFIED
- FIREPROOF
- ANSI A137.1 > 0,42
- SHADE VARIATION V2



COLOUR	SURFACE	800x800mm	400x800mm	600x600mm	300x600mm
WHITE	MATT	HEG80092	MA-HEG80092	HGR60092	MA-HGR60092
LIGHT GREY	MATT	HEG80091	MA-HEG80091	HGR60091	MA-HGR60091
MEDIUM GREY	MATT	HEG80093	MA-HEG80093	HGR60093	MA-HGR60093

## PACKING

SIZE	THICKNESS	PCS/BOX	M <sup>2</sup> /BOX	KG/BOX	CTNS/PALLET	M <sup>2</sup> /PALLET	KG/PALLET
800x800mm	10mm	3	1.92	45.00	28	53.76	1260.00
400x800mm	10mm	4	1.28	30.00	40	51.20	1200.00
600x600mm	9.5mm	4	1.44	31.00	36	51.84	1116.00
300x600mm	9.5mm	8	1.44	31.00	40	57.60	1240.00

## PORCELAIN TILE



**CONFORMING TO STANDARDS**

\*EN 14411 / ISO 13006 APPENDIX G. GROUP BIα GL CON Eb ≤ 0.5%

PHYSICAL PROPERTIES	TESTING METHOD	REFERENCE STANDARD	PRODUCT VALUES
LENGTH		±0.6%, ±2.0mm	±0.06%, ±0.6mm
WIDTH	EN ISO 10545-2:2018	±0.6%, ±2.0mm	±0.06%, ±0.6mm
THICKNESS		±5%, ±0.5mm	±1.2%, ±0.1mm
WATER ABSORPTION	EN ISO 10545-3:2018	Eb ≤ 0.5%	Eb ≤ 0.09%
BREAKING STRENGTH(N)		≥ 1300	S ≥ 2000
MODULUS OF RUPTURE(Mpa) , NOT APPLICABLE TO TILES WITH BREAKING STRENGTH ≥ 3000N	EN ISO 10545-4:2019	≥ 35	R ≥ 40
ABRASION RESISTANCE	EN ISO 10545-7:1998 / AC:1999	REPORT VALUE	CLASS 2, 600 CYCLES / CLASS 4, 2100 CYCLES
THERMAL SHOCK RESISTANCE	EN ISO 10545-9:2013	PASS ACCORDING TO EN ISO 10545-9:2013	FULLY RESISTANCE
CRAZING RESISTANCE(GLAZED TILES)	EN ISO 10545-11:1996	PASS ACCORDING TO EN ISO 10545-11:1996	FULLY RESISTANCE
SLIPPERINESS	DIN 51130:2014	DECLARED VALUE	R9 / R10 / R11
REACTION TO FIRE	--	CLASS A1 OR A1FL	WALL - CLASS A1; FLOOR - CLASS A1fl
RESISTANCE TO STAINING	EN ISO 10545-14:2015	MINIMUM CLASS 3	CLASS 5
RESISTANCE TO HOUSEHOLD CHEMICALS AND SWIMMING POOL SALTS		MINIMUM CLASS B	A
RESISTANCE TO LOW CONCENTRATIONS OF ACIDS AND ALKALIS	EN ISO 10545-13:2016	DECLARED VALUE	LA
RESISTANCE TO LOW CONCENTRATIONS OF ACIDS AND ALKALIS		DECLARED VALUE	HA

\* EXCLUDING HYDROFLUORIC ACID AND DERIVATIVES

## VITRIFIED PORCELAIN TILE



**CONFORMING TO STANDARDS**

\*EN 14411 / ISO 13006 APPENDIX H. GROUP BIb GL CON 0.5% < Eb ≤ 3%

PHYSICAL PROPERTIES	TESTING METHOD	REFERENCE STANDARD	PRODUCT VALUES
LENGTH		±0.3%, ±1.0mm	±0.02%, ±0.1mm
WIDTH	EN ISO 10545-2:2018	±0.3%, ±1.0mm	±0.02%, ±0.1mm
THICKNESS		±5%, ±0.5mm	±1.0%, ±0.1mm
WATER ABSORPTION	EN ISO 10545-3:2018	0.5% < Eb ≤ 3%	2.9%
BREAKING STRENGTH(N)		≥ 1100	S ≥ 2000 ≥ 1650
MODULUS OF RUPTURE(Mpa) , NOT APPLICABLE TO TILES WITH BREAKING STRENGTH ≥ 3000N	EN ISO 10545-4:2019	≥ 35 ≥ 30	R ≥ 40 ≥ 33
ABRASION RESISTANCE	EN ISO 10545-7:1998 / AC:1999	REPORT VALUE	CLASS 2, 600 CYCLES / CLASS 4, 2100 CYCLES
THERMAL SHOCK RESISTANCE	EN ISO 10545-9:2013	PASS ACCORDING TO EN ISO 10545-9:2013	FULLY RESISTANCE
CRAZING RESISTANCE(GLAZED TILES)	EN ISO 10545-11:1996	PASS ACCORDING TO EN ISO 10545-11:1996	FULLY RESISTANCE
SLIPPERINESS	DIN 51130:2014	DECLARED VALUE	R9 / R10 / R11
REACTION TO FIRE	--	CLASS A1 OR A1FL	WALL - CLASS A1; FLOOR - CLASS A1fl
RESISTANCE TO STAINING	EN ISO 10545-14:2015	MINIMUM CLASS 3	CLASS 5
RESISTANCE TO HOUSEHOLD CHEMICALS AND SWIMMING POOL SALTS		MINIMUM CLASS B	A
RESISTANCE TO LOW CONCENTRATIONS OF ACIDS AND ALKALIS	EN ISO 10545-13:2016	DECLARED VALUE	LA
RESISTANCE TO LOW CONCENTRATIONS OF ACIDS AND ALKALIS		DECLARED VALUE	HA

\* EXCLUDING HYDROFLUORIC ACID AND DERIVATIVES