

# GRANITE LANDSCAPE TILE

Modern Outdoor Flooring Solution



2020  
ATLAS



Modern Outdoor Flooring Solution



**WASSER WERKZ (PENANG) SDN BHD**



88E, Jalan Masjid Negeri,  
11600 Pulau Pinang, Malaysia



+604 659 1788



+6012 667 9736



wasserwerkz.penang@gmail.com



<https://wasserwerkzpenang.com/>

# NATURE

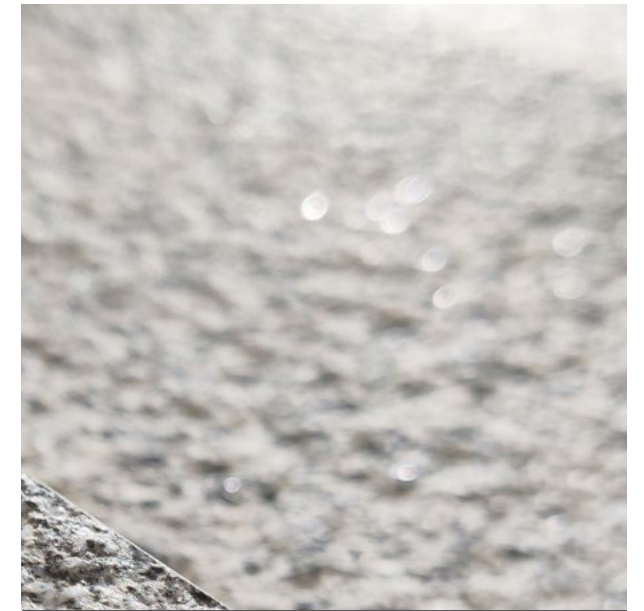
Urban Life in Nature

让自然走进生活

# APPEARANCE

With the Top-Brand 12-channel digital printer from System Italy, along with automated charging control technology, the general appearance is way more vibrant than regular porcelain tiles.

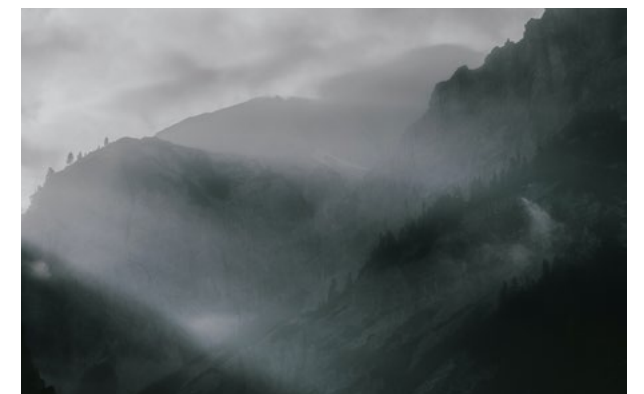
原石肌理 — 引进意大利西斯特姆十二道数码喷印系统，结合全自动靓彩布控技术，纹理丰富度比常规陶瓷砖丰富 50 倍



## Mineral Reflection

Crystal Flake of Mica Minerals is added on the surface that surely upgrades the sense of quality with natural alike brilliance.

矿物色彩 — 产品表面添加云母片矿物晶体，产品在阳光照射下，折射出天然石材中蕴藏的玻璃相矿物的闪烁光彩



High-precision 3D laser surface duplication, with CNC machining center, 100% achieved the touch just like real natural granite.

高精激光三维抄数技术获取原石肌理，经过精密 CNC 数控加工中心，还原天然石材的触感

Touch Color Texture Crystal

# 9 Colors

## GRANITE LANDSCAPE TILE 花岗岩瓷砖 / 9 种设计



**Sesame White Light 白麻石**

HMG60908M/L	600 x 600	15.5/18.0 mm
HMG96908M/L	600 x 900	15.5/18.0 mm
HMG26908M/L	600 x 1200	15.5/18.0 mm



**Sesame White 芝麻白**

HMG60901M/L	600 x 600	15.5/18.0 mm
HMG96901M/L	600 x 900	15.5/18.0 mm
HMG26901M/L	600 x 1200	15.5/18.0 mm



**Sesame White Extra 灰麻石**

HMG60913M/L	600 x 600	15.5/18.0 mm
HMG96913M/L	600 x 900	15.5/18.0 mm
HMG26913M/L	600 x 1200	15.5/18.0 mm



**Vintage Grey Light 芝麻灰**

HMG60902M/L	600 x 600	15.5/18.0 mm
HMG96902M/L	600 x 900	15.5/18.0 mm
HMG26902M/L	600 x 1200	15.5/18.0 mm



**Vintage Grey 芝麻黑**

HMG60903M/L	600 x 600	15.5/18.0 mm
HMG96903M/L	600 x 900	15.5/18.0 mm
HMG26903M/L	600 x 1200	15.5/18.0 mm



**Vintage Grey Extra 中国黑**

HMG60906M/L	600 x 600	15.5/18.0 mm
HMG96906M/L	600 x 900	15.5/18.0 mm
HMG26906M/L	600 x 1200	15.5/18.0 mm



**Sunset Beige 黄金麻**

HMG60904M/L	600 x 600	15.5/18.0 mm
HMG96904M/L	600 x 900	15.5/18.0 mm
HMG26904M/L	600 x 1200	18.0 mm



**Rusty Beige 黄金麻 A**

HMG60907M/L	600 x 600	15.5/18.0 mm
HMG96907M/L	600 x 900	15.5/18.0 mm
HMG26907M/L	600 x 1200	15.5/18.0 mm



**Maroon Red 贵妃红**

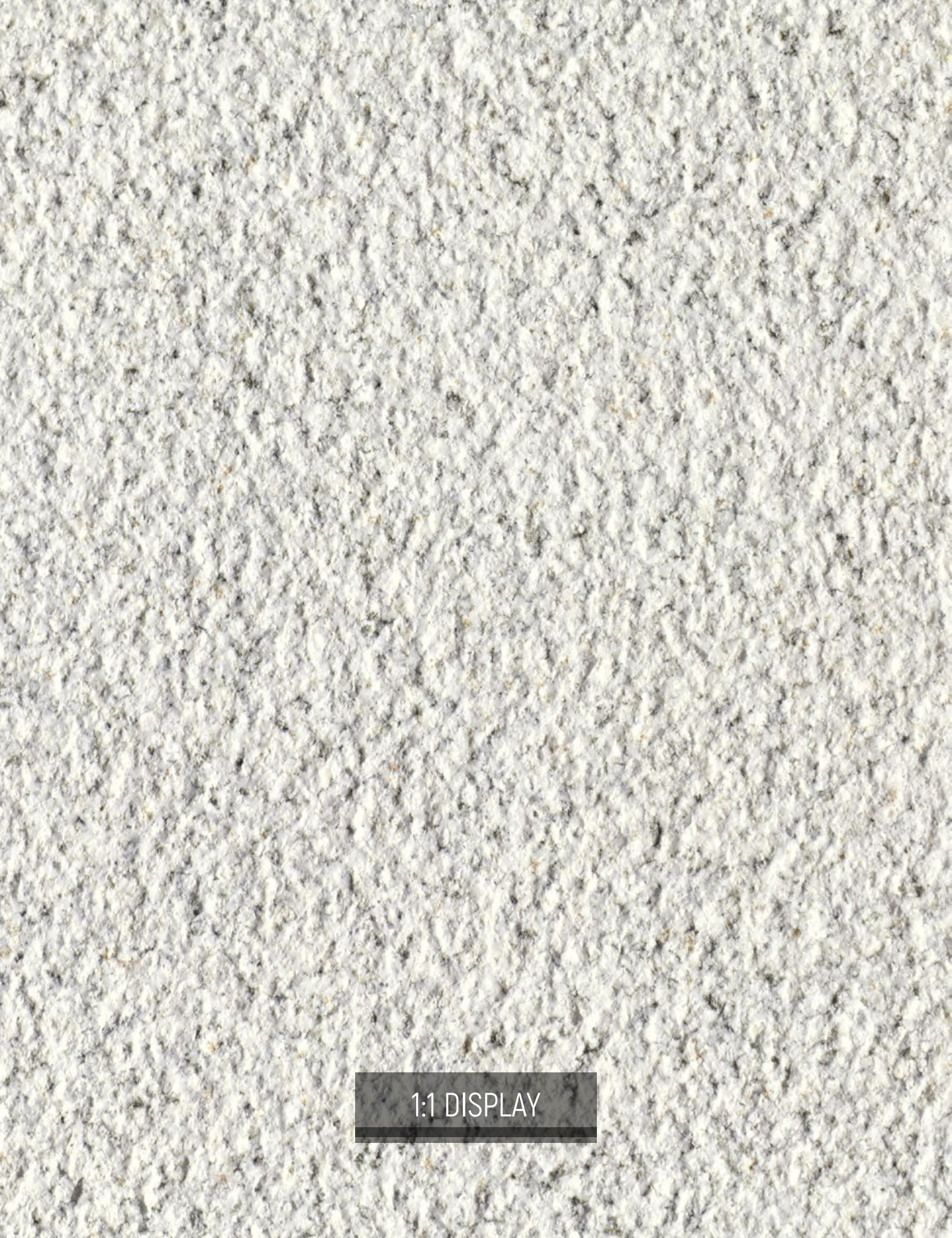
HMG60905M/L	600 x 600	15.5/18.0 mm
HMG26905M/L	600 x 1200	15.5/18.0 mm

### Sizing and Shaping

According to the different customers' needs, full support of professional tile processing is provided, such as regular size modification, special-shaped cutting, and any other process you can tell.

### 深度加工

配套专业加工生产线，可根据客户的不同需求，提供常规尺寸修改、异型造型切割、深化加工等产品加工服务



1:1 DISPLAY



# SESAME WHITE LIGHT

白麻石



600×1200mm

HMG26908M 15.5 mm  
HMG26908L 18.0 mm



600×900mm

HMG96908M 15.5 mm  
HMG96908L 18.0 mm



600×600mm

HMG60908M 15.5 mm  
HMG60908L 18.0 mm



300×600mm

HMG60908M 15.5 mm  
HMG60908L 18.0 mm



15 mm  
18 mm



R11 Non-Slip



Super  
Wear-Resistant



Weather  
Resistant



FULLBODY  
通体



# ROMANTIC TOWN 罗曼小镇

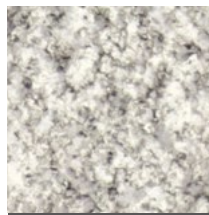


Developer : AGILE  
Address : ZHENGZHOU, HENAN

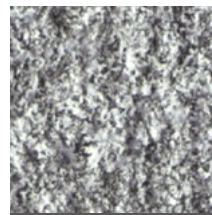
开发商：雅乐居  
工程地址：中国河南郑州石河路与伊洛河路交口西南方



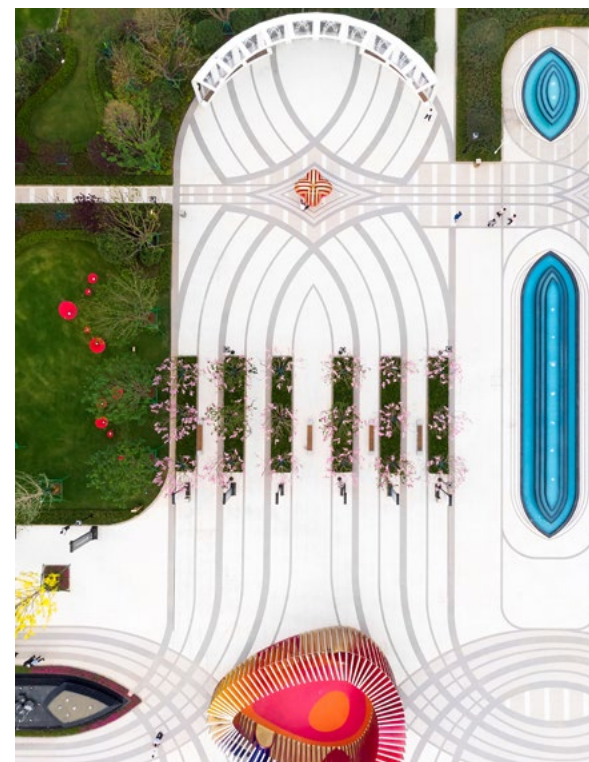
Sesame White Light



Vintage Grey Light



Vintage Grey

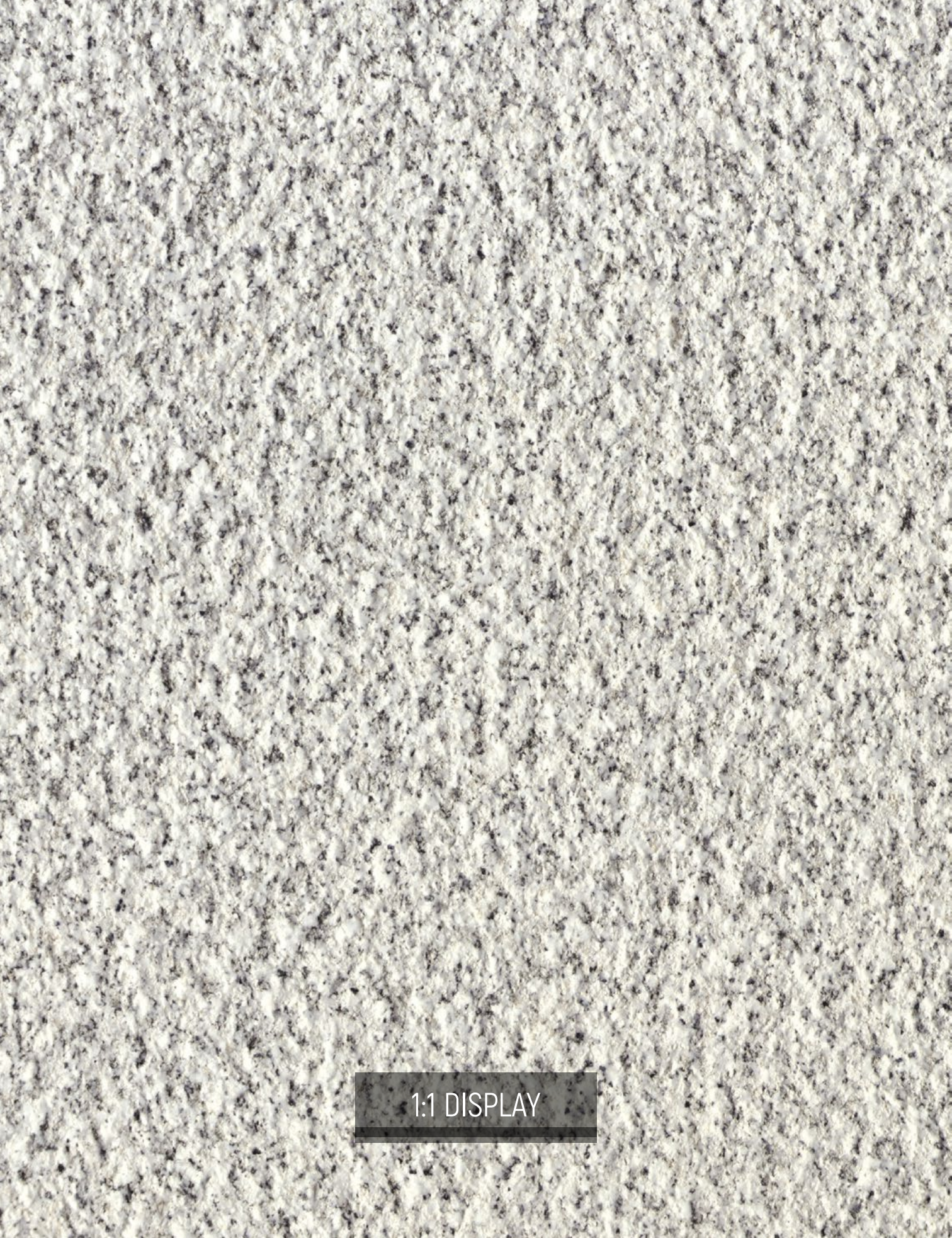


# SESAME WHITE LIGHT

白麻石

## STRENGTH

Without Getting Too Technical, The Science Of Hardness Is Fairly Simple. The Harder, The Better. World-Class Hardness Guarentee



1:1 DISPLAY



# SESAME WHITE

芝麻白



600×1200mm

HMG26901M 15.5 mm  
HMG26901L 18.0 mm



600×900mm

HMG96901M 15.5 mm  
HMG96901L 18.0 mm



600×600mm

HMG60901M 15.5 mm  
HMG60901L 18.0 mm



300×600mm

HMG60901M 15.5 mm  
HMG60901L 18.0 mm



15 mm  
18 mm



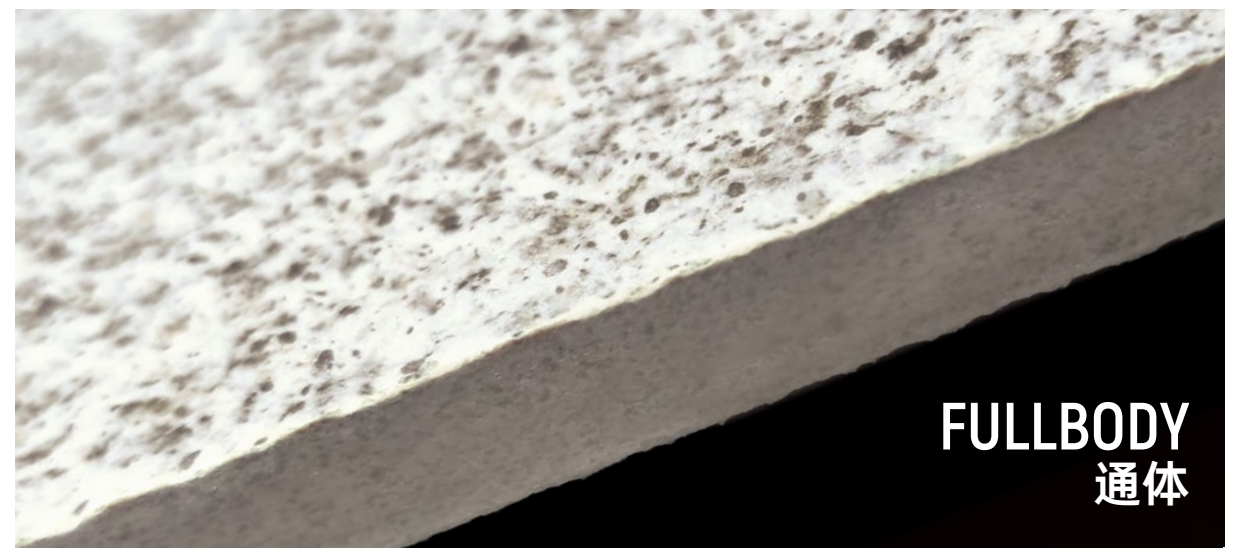
R11 Non-Slip



Super  
Wear-Resistant



Weather  
Resistant



**FULLBODY**  
通体



# TIANPU 天璞



Developer : LOGAN

Address : Panyu, Guangzhou, Guangdong

开发商：龙光地产

工程地址：中国广东广州大夫山下景观大道东侧



Sesame White



Vintage Grey Light



# SESAME WHITE

芝麻白

## APPEARANCE

A Simple Way To Upgrade Your Property With Luxurious Appearance. An Excellent Surface For Outdoor Areas.

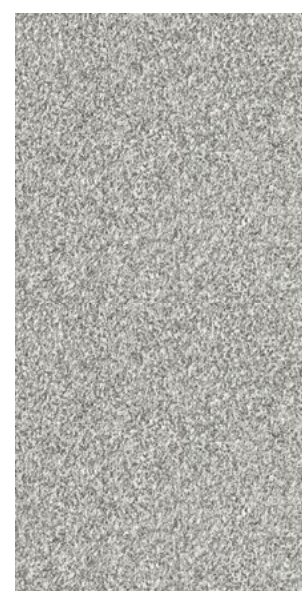


1:1 DISPLAY

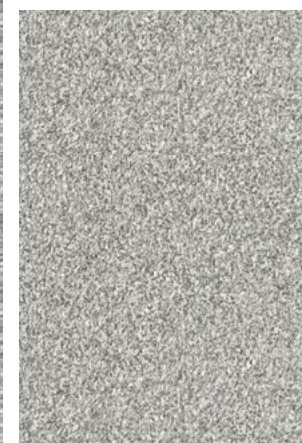


# SESAME WHITE LIGHT

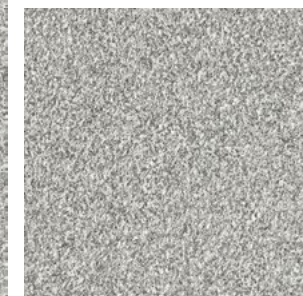
灰麻石



600×1200mm  
HMG26913M 15.5 mm  
HMG26913L 18.0 mm



600×900mm  
HMG96913M 15.5 mm  
HMG96913L 18.0 mm



600×600mm  
HMG60913M 15.5 mm  
HMG60913L 18.0 mm



300×600mm  
HMG60913M 15.5 mm  
HMG60913L 18.0 mm



15 mm  
18 mm



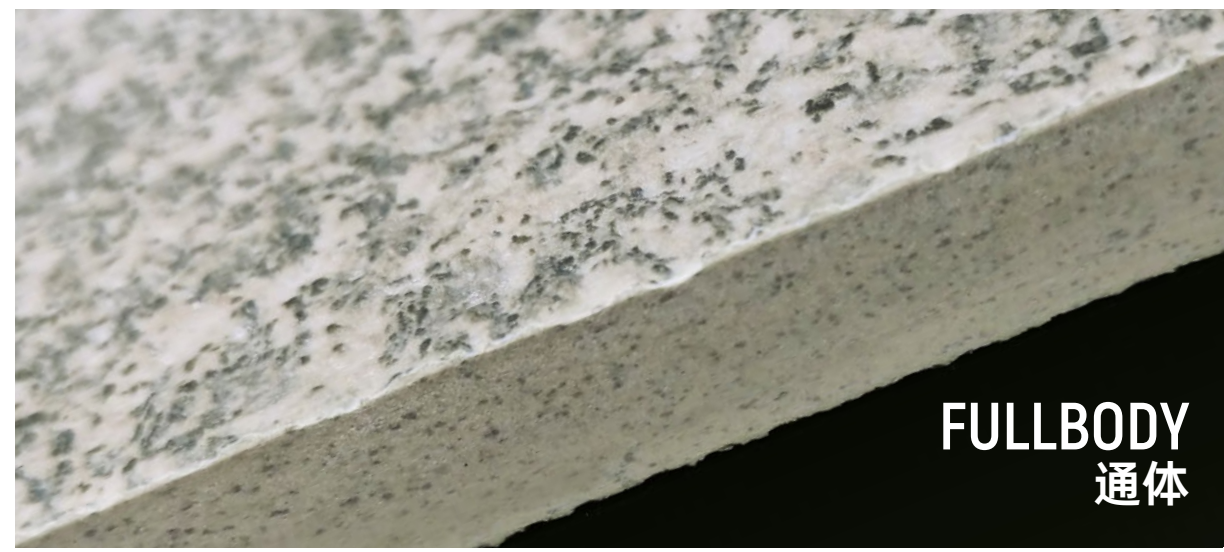
R11 Non-Slip



Super  
Wear-Resistant



Weather  
Resistant



FULLBODY  
通体



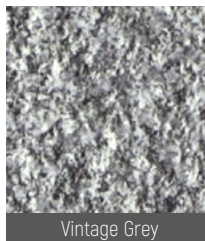
## SUNDAY 新地

Developer : AGILE

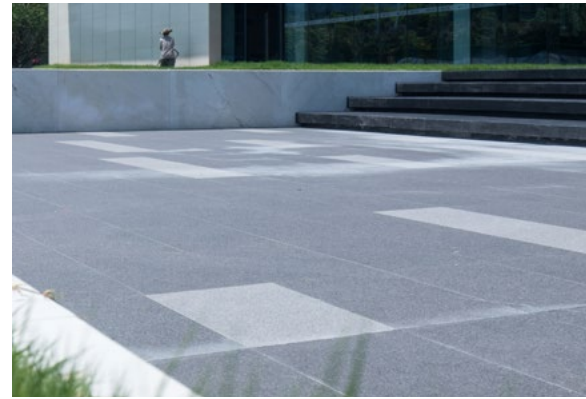
Address : Foshan, Guangdong

开发商：雅乐居

工程地址：中国广东佛山狮山兴业路与红星路交汇处



Vintage Grey

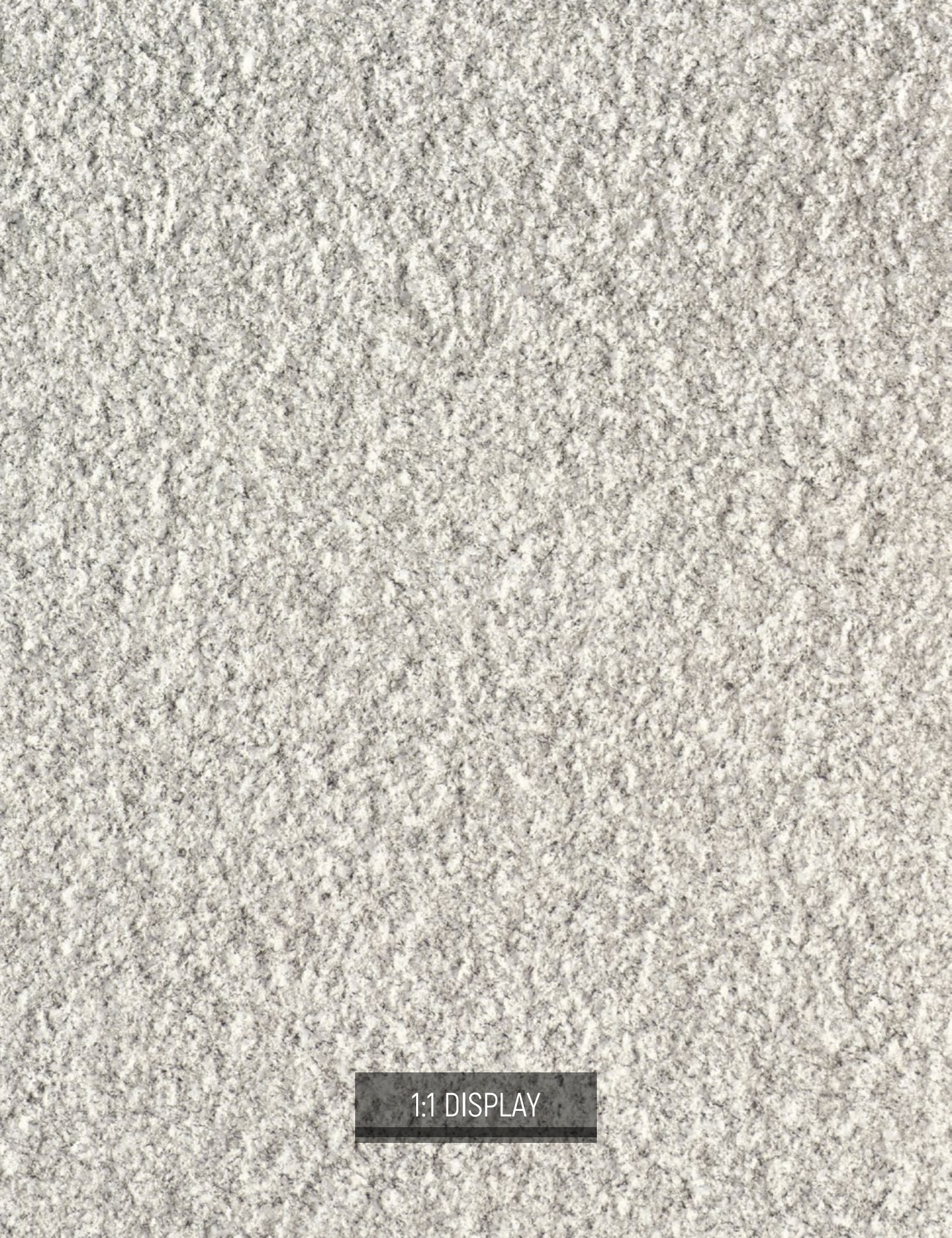


# SESAME WHITE LIGHT

灰麻石

## DEPENDABLE

No Fear With Experiences Of Significant Weather Shifts From Season To Season, It Is Always Dependable.



1:1 DISPLAY



# VINTAGE GREY LIGHT

芝麻灰



600×1200mm

HMG26902M 15.5 mm  
HMG26902L 18.0 mm



600×900mm

HMG96902M 15.5 mm  
HMG96902L 18.0 mm



600×600mm

HMG60902M 15.5 mm  
HMG60902L 18.0 mm



300×600mm

HMG60902M 15.5 mm  
HMG60902L 18.0 mm



15 mm  
18 mm



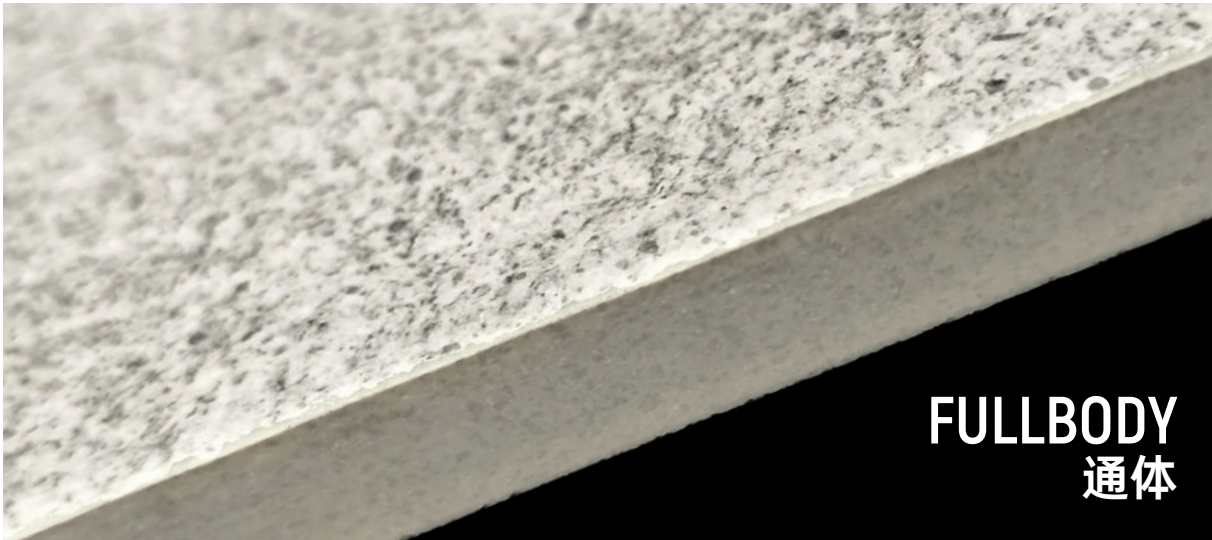
Non-Slip



Super  
Wear-Resistant



Weather  
Resistant



FULLBODY  
通体



# VINTAGE GREY LIGHT

芝麻灰

## BANYAN MANSION 玖榕台

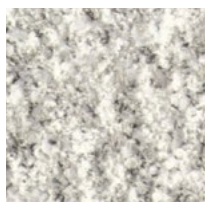
SUNAC 融创  
至臻 · 致远

Developer : SUNAC

Address : Enping, Jiangmen, Guangdong

开发商：融创

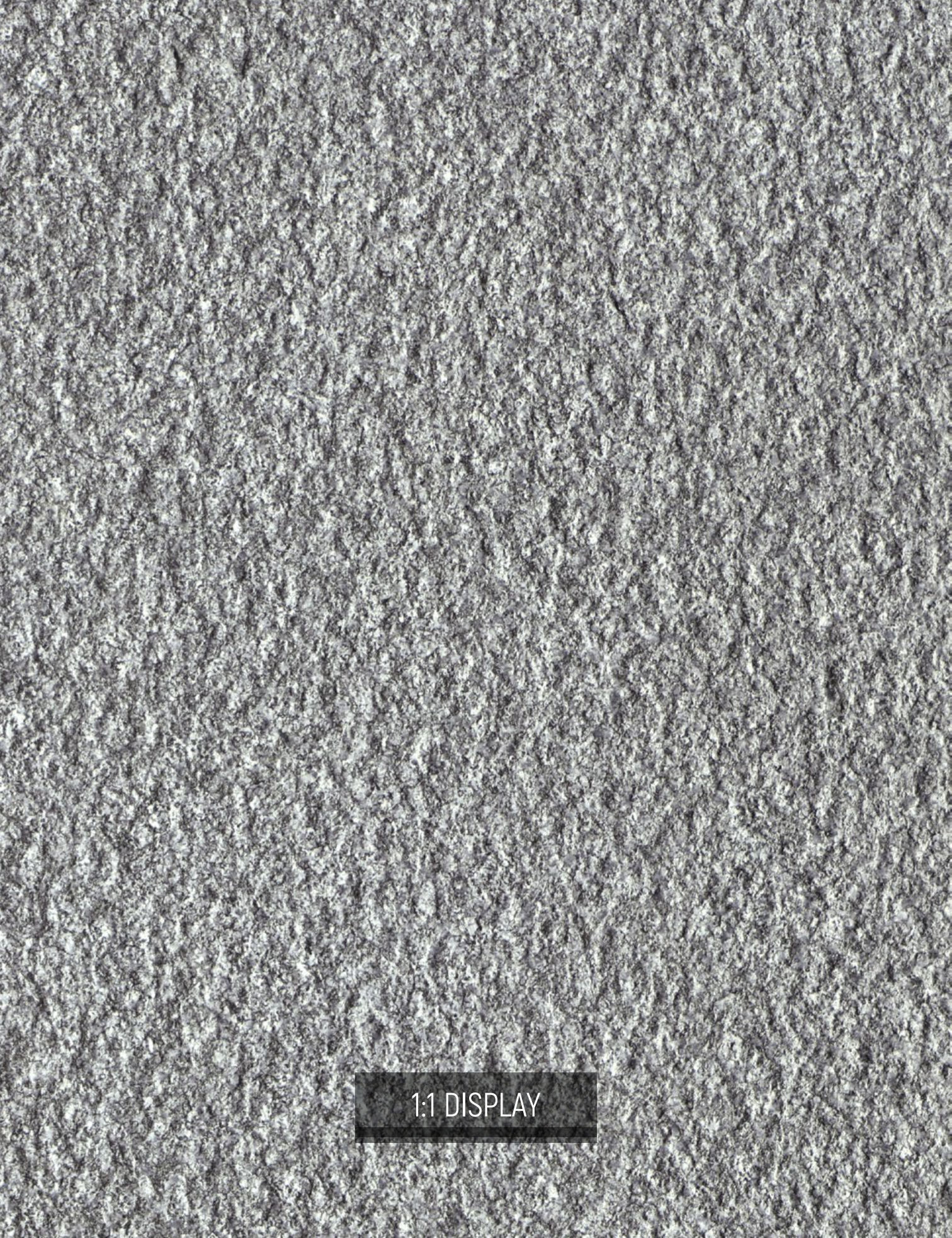
工程地址：中国广东江门圣堂沿江北路 2 号



Vintage Grey Light

### LOW COLOR DEVIATION

Stable Extension Of Your Outdoor Surface Without Color Diviation. One Of The Best Outdoor Tile Options If You Are Looking For Natural Stone



1:1 DISPLAY



# VINTAGE GREY

芝麻黑



600×1200mm

HMG26903M 15.5 mm  
HMG26903L 18.0 mm



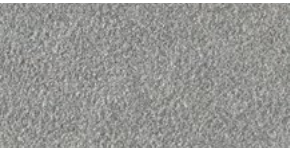
600×900mm

HMG96903M 15.5 mm  
HMG96903L 18.0 mm



600×600mm

HMG60903M 15.5 mm  
HMG60903L 18.0 mm



300×600mm

HMG60903M 15.5 mm  
HMG60903L 18.0 mm



15 mm  
18 mm



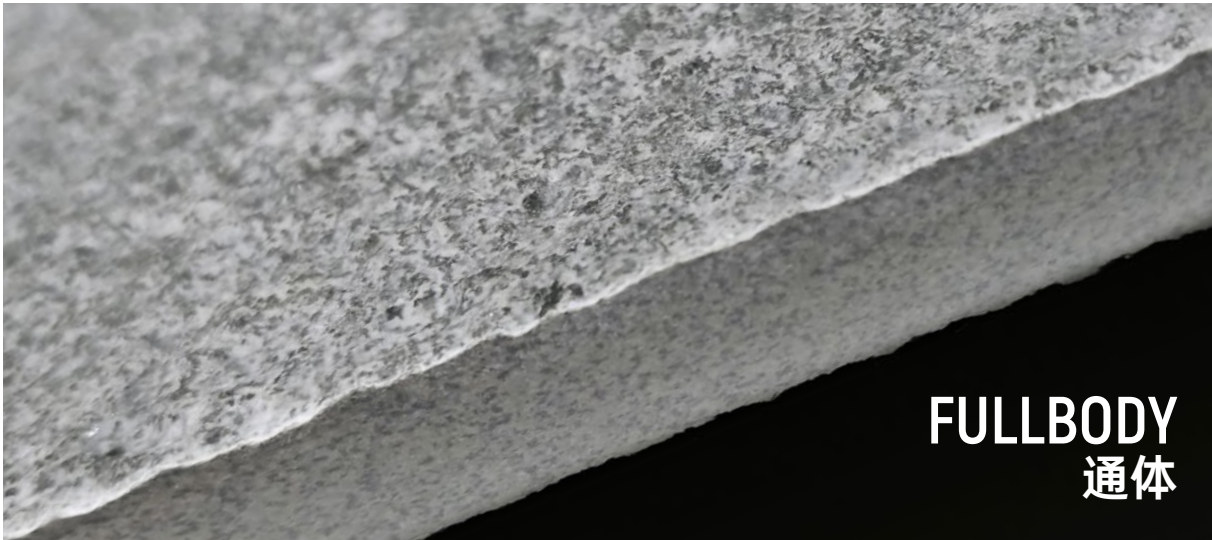
Non-Slip



Super  
Wear-Resistant



Weather  
Resistant



FULLBODY  
通体



## BAIXIANG WALKING STREET 白象街

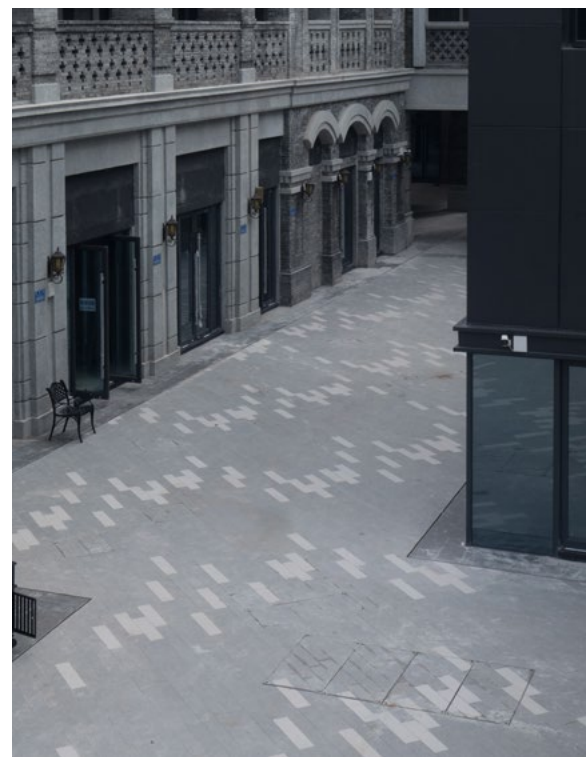
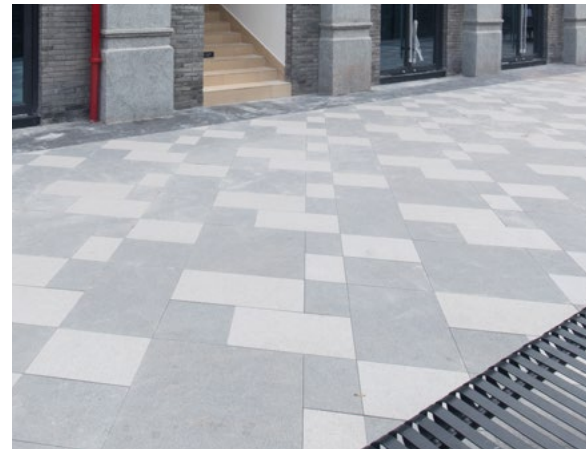
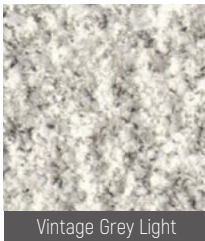
SUNAC 融创  
至臻 · 致远

Developer : SUNAC

Address : Chongqing, China

开发商：融创

工程地址：中国重庆解放碑

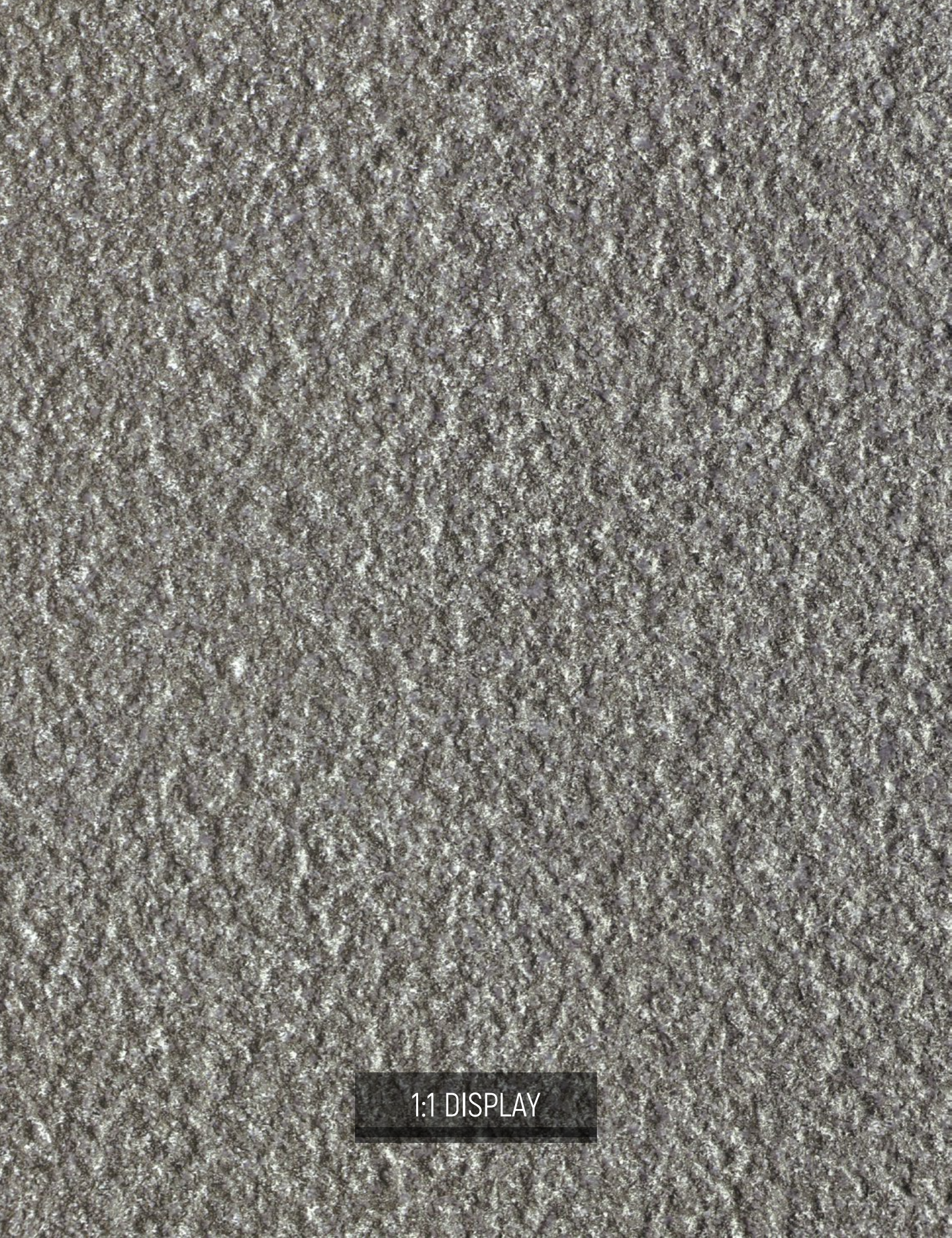


# VINTAGE GREY

芝麻黑

## URBAN FUSION

Blend Up Indoor & Outdoor Living. Create A Seamless Look Between The Outdoors And In. Urban Life In A Natural Way.



1:1 DISPLAY



# VINTAGE GREY EXTRA

中国黑



600×1200mm

HMG26906M 15.5 mm  
HMG26906L 18.0 mm



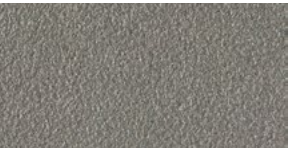
600×900mm

HMG96906M 15.5 mm  
HMG96906L 18.0 mm



600×600mm

HMG60906M 15.5 mm  
HMG60906L 18.0 mm



300×600mm

HMG60906M 15.5 mm  
HMG60906L 18.0 mm



15 mm  
18 mm



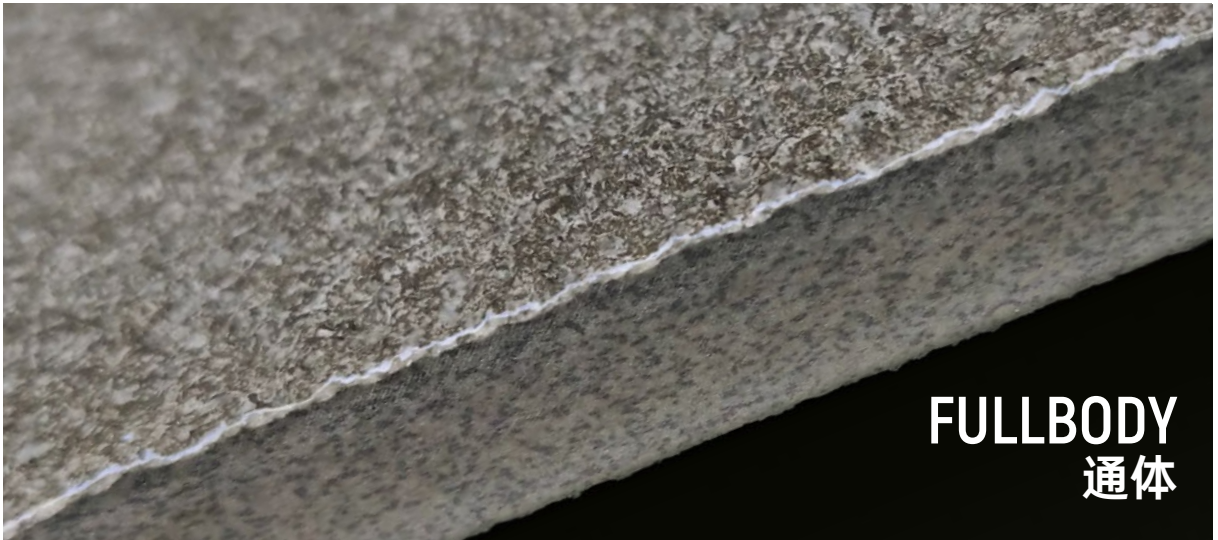
Non-Slip



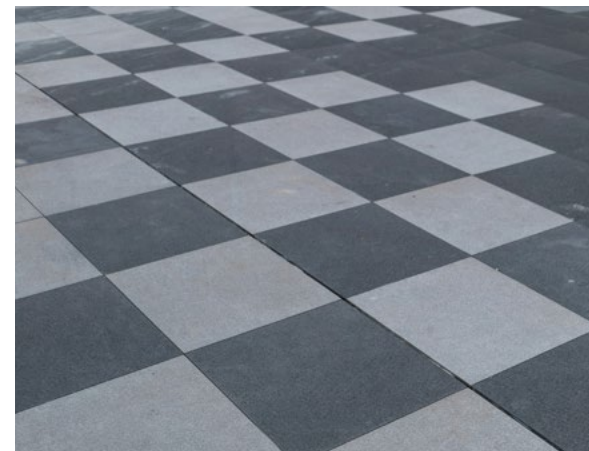
Super  
Wear-Resistant



Weather  
Resistant



FULLBODY  
通体



# VINTAGE GREY LIGHT

芝麻灰

## ONE SINO PARK 滨江壹号



Developer : SUNAC  
Address : Chongqing, China

开发商：雅乐居  
工程地址：中国重庆沙滨路



Vintage Grey Extra



Sesame White

### COLOR RANGE

The Colors Are Rich And Full Of Details, Elegant And Yet Strong. Available In A Range Of Colors, From Light To Dark, From White To Black



1:1 DISPLAY



# SUNSET BEIGE

黄金麻



600×1200mm

HMG26904M 15.5 mm  
HMG26904L 18.0 mm



600×900mm

HMG96904M 15.5 mm  
HMG96904L 18.0 mm



600×600mm

HMG60904M 15.5 mm  
HMG60904L 18.0 mm



300×600mm

HMG60904M 15.5 mm  
HMG60904L 18.0 mm



15 mm  
18 mm



R11 Non-Slip



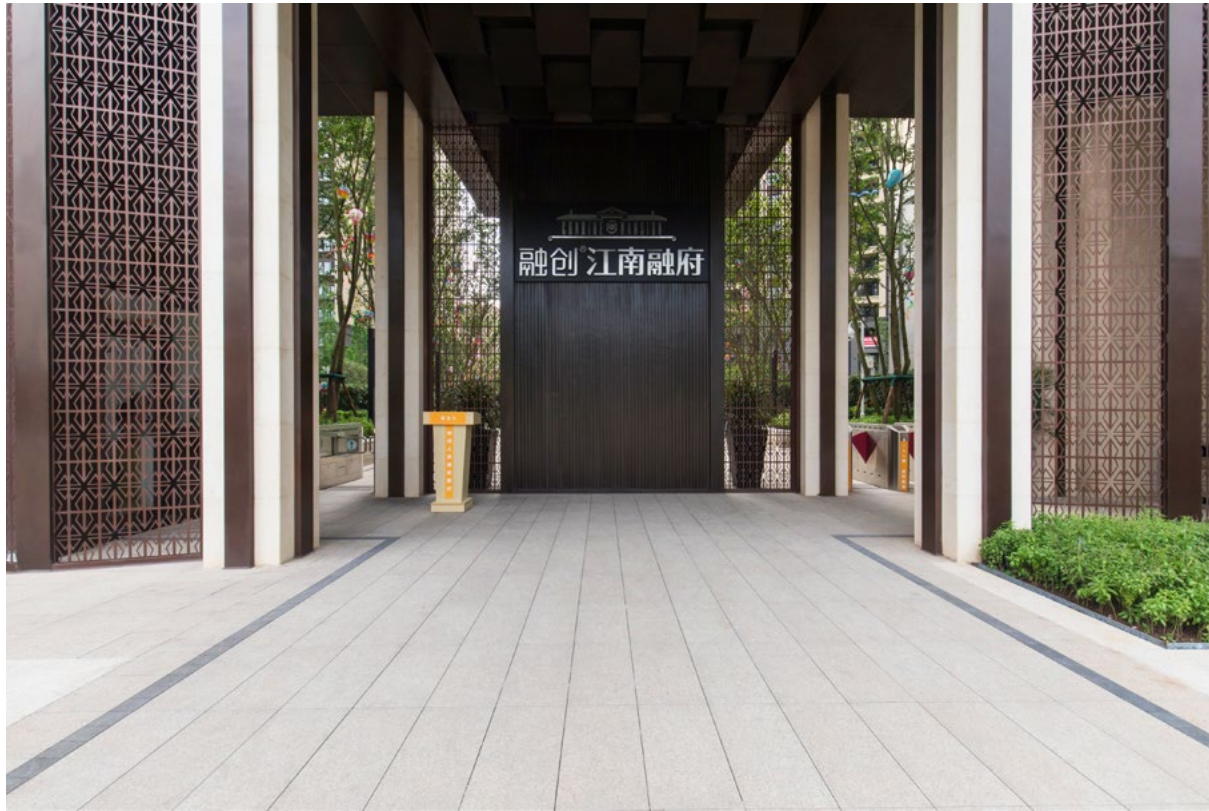
Super  
Wear-Resistant



Weather  
Resistant



FULLBODY  
通体



## JIANGNAN MANSION 江南融府



Developer : SUNAC

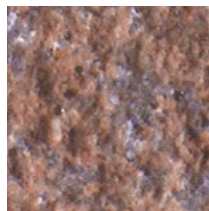
Address : Chongqing, China

开发商：融创

工程地址：中国重庆南岸6号线刘家坪轻轨站附近



Sunset Beige



Maroon Red



# SUNSET BEIGE

黄金麻

## MAINTENANCE

The Colors Are Rich And Full Of Details, Elegant And Yet Strong. Available In A Range Of Colors, From Light To Dark, From White To Black



1:1 DISPLAY



# RUSTY BEIGE

黄金麻 A



<b>600×1200mm</b>	<b>600×900mm</b>	<b>600×600mm</b>	<b>300×600mm</b>
HMG26907M 15.5 mm HMG26907L 18.0 mm	HMG96907M 15.5 mm HMG96907L 18.0 mm	HMG60907M 15.5 mm HMG60907L 18.0 mm	HMG60907M 15.5 mm HMG60907L 18.0 mm



15 mm  
18 mm



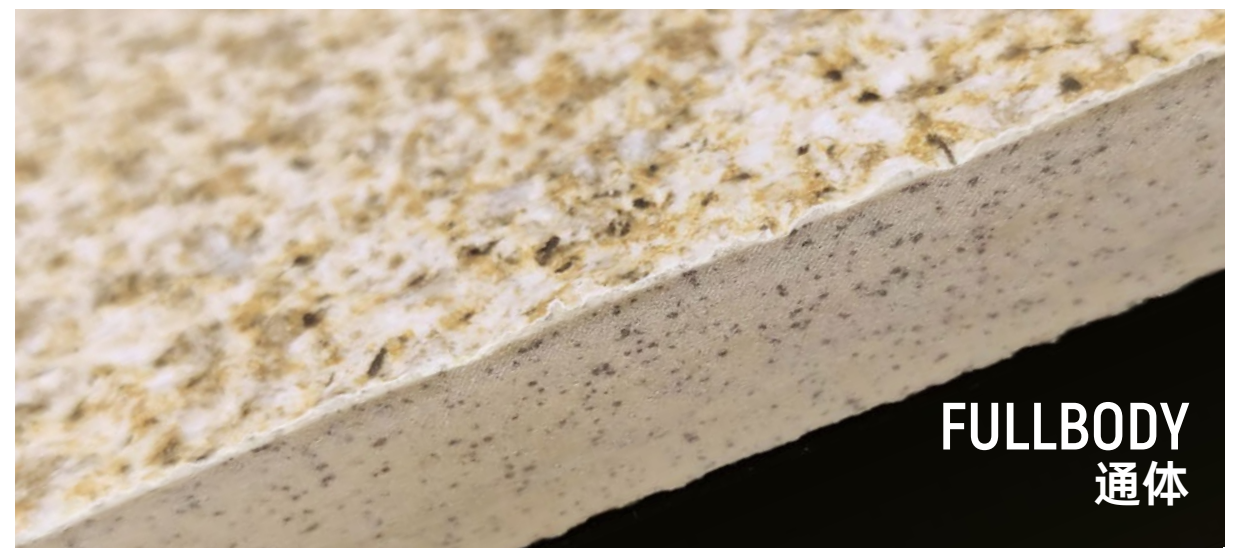
R11 Non-Slip



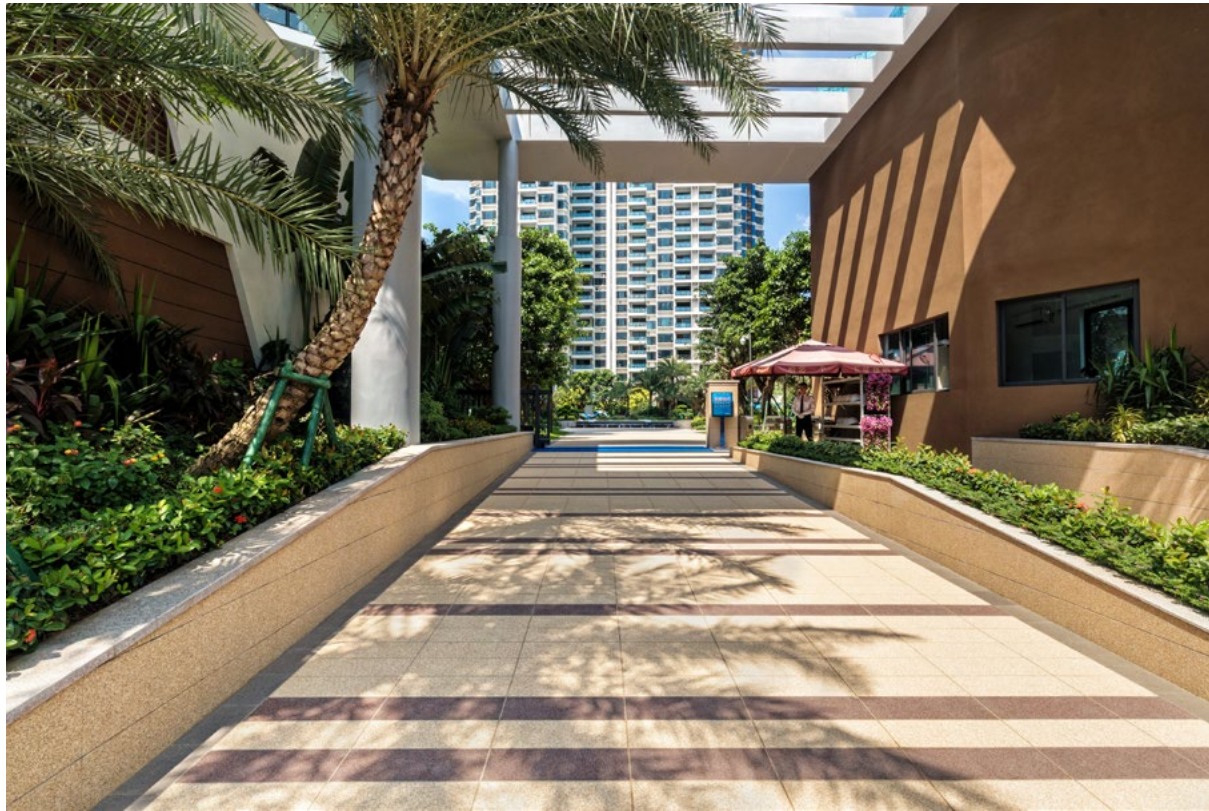
Super  
Wear-Resistant



Weather  
Resistant



**FULLBODY**  
通体

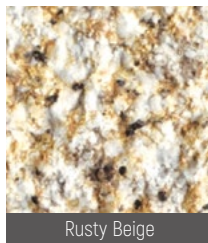


## PARKLANE HARBOUR 银滩花园

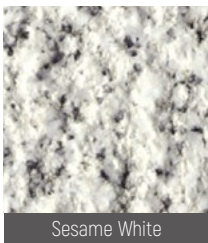


Developer : COUNTRY GARDEN  
Address : Dayawan, Huizhou, Guangdong

开发商：碧桂园  
工程地址：中国广东惠州大亚湾惠深沿海高速小径湾出口



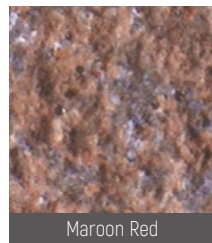
Rusty Beige



Sesame White



Vintage Grey



Maroon Red

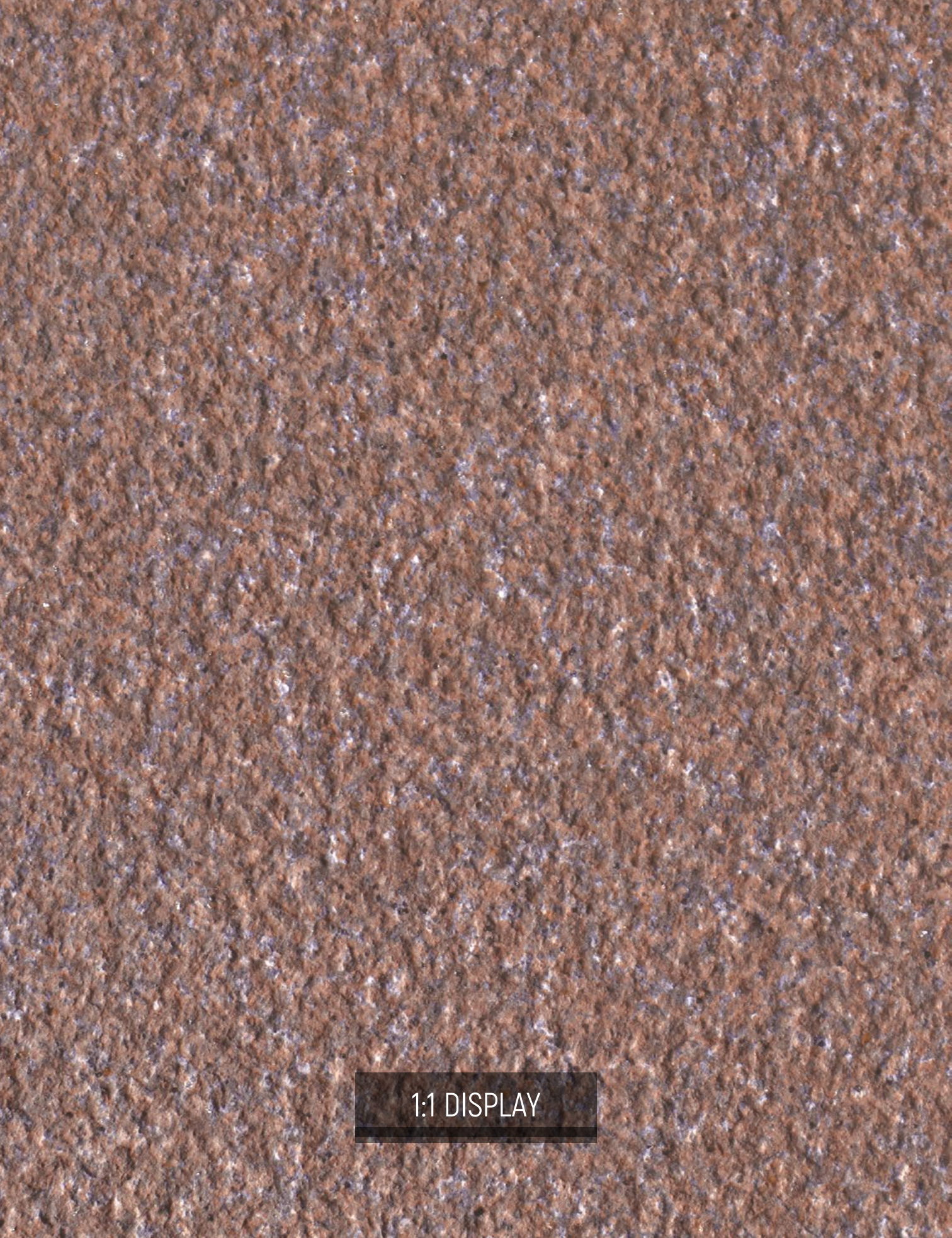


# RUSTY BEIGE

黄金麻 A

## PERFORMANCE

Superior Choice With Built-In Slip Resistance, Much Denser Than Natural Granite That Works Perfectly Against Stains



1:1 DISPLAY



# MAROON RED

贵妃红



600×1200mm

HMG26905M 15.5 mm  
HMG26905L 18.0 mm



600×600mm

HMG60905M 15.5 mm  
HMG60905L 18.0 mm



300×600mm

HMG60905M 15.5 mm  
HMG60905L 18.0 mm



15 mm  
18 mm



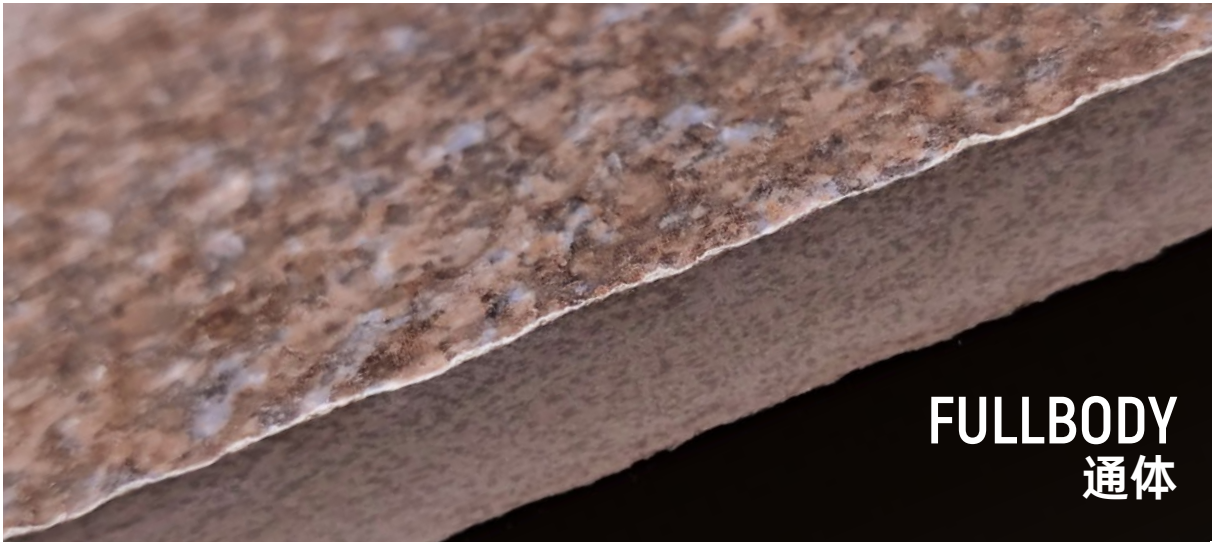
Non-Slip



Super  
Wear-Resistant



Weather  
Resistant



FULLBODY  
通体



## MUNICIPAL PROJECT 市政工程

Developer : MAOMING CITY  
Address : Maoming, Guangdong

工程方：茂名市政  
工程地址：中国广东茂名



Sesame White Light



















# MAROON RED

贵妃红

### MULTIPLE FIT-IN

No Matter For Private Project  
Or Public Project, We Always  
Fulfill Your Needs. All Stylish  
And Strong Enough To Last In  
Outdoor Environments







# GRANITE LANDSCAPE TILE

PHYSICAL PROPERTIES	TESTING METHOD	REFERENCE STANDARD	15.5mm	18mm
 LENGTH	EN ISO 10545-2:2018	±0.6%, ±2.0MM	-0.02-0%, -0.2-0MM	0-+0.02%, 0-0.1MM
 THICKNESS	EN ISO 10545-2:2018	±5%, ±0.5MM	0-+0.6%, 0-+0.1MM	-0.3-+0.6%, 0-+0.01MM
 STRAIGHTNESS OF SIDES	GB/T 3810.2	±0.5%, ±1.5MM	-0.03-+0.03%, -0.2-+0.17MM	-0.03-+0.03%, -0.20-+0.17MM
 RECTANGULARITY	GB/T 3810.2	±0.5%, ±2.0MM	-0.04-+0.04%, -0.22-+0.21MM	-0.04-+0.04%, -0.22-+0.21MM
 WATER ABSORPTION %	EN ISO 10545-3:2018	AVG ≤ 0.5%, SM ≤ 0.6%	0.06%, 0.04-0.08%	0.06%, 0.05-0.07%
 SLIPPERINESS	DIN 51130:2014	Declared Value	ges : 25.8° R11	ges : 24.2° R11
 COEFFICIENT OF FRICTION	GB/T 4100-2015 Annex M	Individual ≥ 0.50	Dry Method 0.86-0.87	Dry Method 0.86-0.87
 RESISTANCE TO STAINING	EN ISO 10545-14:2015	Minimum Class 3	Class 5	Class 5
 RESISTANCE TO HOUSEHOLD CHEMICALS AND SWIMMING POOL SALTS	EN ISO 10545-13:2016	Minimum Class B	A	A
 RESISTANCE TO LOW CONCENTRATIONS OF ACIDS AND ALKALIS	EN ISO 10545-13:2016	Declared Value	LA	LA
 BREAKING STRENGTH	EN ISO 10545-4:2019	≥ 1300N	5228 N	7996
 MODULUS OF RUPTURE	GB/T 3810.4	Avg. ≥ 35Mpa Individual ≥ 32Mpa	35Mpa, 34-35Mpa	35Mpa, 35-36Mpa
 Crazing Resistance: Glazed Tiles	EN ISO 10545-11:1996	Pass	Fully Resistance	Fully Resistance
 WEAR RESISTANCE	GB/T 3810.6	≤0.1g	0.05g	0.05g
 ABRASION RESISTANCE	EN ISO 10545-7:1998 / AC:1999	Report Abrasion Class report cycles passed	Call4 6000Cycles	Call4 6000Cycles
 FROST RESISTANCE	GB/T 3810.12	Fully Resistance	Pass	Pass
 Thermal Shock Resistance	EN ISO 10545-9:2013	Pass	Fully Resistance	Fully Resistance
 COEFFICIENT OF LINEAR THERMAL EXPANSION	GB/T 3810.8	Coefficient of linear thermal expansion / °C <sup>-1</sup> 7.1x10 <sup>-6</sup> [°C <sup>-1</sup> ]		7.1x10 <sup>-6</sup> [°C <sup>-1</sup> ]
 MOISTURE EXPANSION	GB/T 3810.10	Moisture Expansion %	<0.01%	<0.01%



## CONFORMING TO STANDARDS

\*EN 14411 / ISO 13006 APPENDICE G GRUPPO Bia GL CON Eb ≤ 0.5%

PHYSICAL PROPERTIES	TESTING METHOD	REFERENCE STANDARD	15.5mm	18mm
 SOLUBLE LEAD CONTENT	GB/T 3810.15	≤ 20 mg/kg	<2.5 mg/kg	<2.5 mg/kg
 LEAD RELEASE	GB/T 3810.15	LEAD Release Amount mg/L, mg/dm <sup>2</sup>	<0.5mg/L <0.02mg/dm <sup>2</sup>	<0.5mg/L <0.02mg/dm <sup>2</sup>
 SOLUBLE CADMIUM CONTENT	GB/T 3810.15	≤ 5 mg/kg	<0.25 mg/kg	<0.25 mg/kg
 CADMIUM RELEASE	GB/T 3810.15	CADMIUM Release Amount mg/L, mg/dm <sup>2</sup>	<0.05mg/L <0.002mg/dm <sup>2</sup>	<0.05mg/L <0.002mg/dm <sup>2</sup>
 INTERNAL EXPOSURE INDEX	GB 6566-2010	Class A decorative materials :IRa ≤ 1.0 Class B decorative materials :IRa ≤ 1.3	0.7 / Class A	0.7 / Class A
 EXTERNAL EXPOSURE INDEX	GB 6566-2010	Class A decorative materials :Ir ≤ 1.3 Class B decorative materials :Ir ≤ 1.9 Class C decorative materials :Ir ≤ 2.8	1.1 / Class A	1.2 / Class A

## PACKING

SIZE	THICKNESS	PCS/BOX	M <sup>2</sup> /BOX	KG/BOX	CTNS/PALLET	M <sup>2</sup> /PALLET	KG/PALLET
600x600mm_24"x24"	18mm	3	1.08	43	26	28.08	1118
600x600mm_24"x24"	15mm	3	1.08	36	30	32.40	1080
600x900mm_24"x36"	18mm	2	1.08	43	38	41.04	1634
600x900mm_24"x26"	15mm	2	1.08	37	40	43.20	1480
600x1200mm_24"x49"	18mm	2	1.44	57	38	54.72	2166
600x1200mm_24"x48"	15mm	2	1.44	50	40	57.60	2000